

# AUSTRALIAN WOOL INDUSTRIES SECRETARIAT INC

Unit 9, 42 - 46 Vella Drive  
Sunshine West Vic 3020  
Australia  
Tel: 03 9311 0103  
Fax: 03 9311 0138

Email: awis@woolindustries.org  
Web: www.woolindustries.org  
ABN: 30 454 304 967  
Reg No: A0041776E



## AWIS WOOL MARKET REVIEW

Week Ending 3 June 2022 (Week 48)

The AWEX EMI finished at 1414¢, 6¢ lower (-0.4%) in Australian currency and 5¢ higher (+0.5%) in US currency at sales in Sydney, Melbourne and Fremantle in Week 48.

34,872 bales were on offer nationally, compared with 45,181 bales last sale. It was the smallest sale since Week 12 in the third week of September when 34,031 bales were offered for sale.

12.8% of the offering was passed in after 3.1% of the potential offering was withdrawn prior to sale. 30,398 bales were sold. AWEX reports that the value of the wool sold was \$50.4 million (\$1,658 per bale), taking the season total to \$2.384 billion (\$1,603 per bale). The number of bales sold at auction this season is now 8.6% greater than in 2020/21.

Day-to-Day and Sale-to-Sale Changes in AWEX Regional Indicators (Week 48)

Centre	Last Sale		Day-to-Day Changes (Week 48)			Sale-to-Sale Change	Closing Indicator	Sale-to-Sale Changes	
	Week	Indicator	Tuesday	Wednesday	Thursday			US ¢	Euro ¢
Eastern	47	1420	-7	+1	No Sale	-6 (-0.4%)	1414	+5	+4
Northern	47	1528	-9	-2	No Sale	-11 (-0.7%)	1517	+1	+1
Southern	47	1348	-6	+3	No Sale	-3 (-0.2%)	1345	+6	+5
Western	47	1504	-11	-3	No Sale	-14 (-0.9%)	1490	-1	-1

The market was influenced by another increase in the US Exchange Rate that saw the EMI go down in A\$, but move up in US\$. All but one of the individual Micron Prices Guide (MPGs) also moved down in A\$. The EMI was relatively unchanged in both currencies on Wednesday when the Exchange Rate eased by 0.19¢.

The US Exchange Rate finished 0.61¢ (0.9%) higher since last week to close at 71.68¢ on Wednesday.

Buyers for China were dominant, with support from buyers for India

Looking ahead, offerings for the coming three sales are again expected to be smaller with an anticipated range from 29,060 bales to 35,328 bales and to be 16.9% less than in the same period last year. The forecast progressive difference to Week 51 is +6.8%.

In other countries, the South African Cape Wools Indicator was up by 0.1% since last sale against a 2.5% appreciation of the Rand against the US Dollar and a 0.7% appreciation against the Euro.

Differences in AWEX MPGs	18.5 and 22.0	18.0 and 22.0	17.5 and 22.0	17.0 and 22.0	16.5 and 22.0
North	No 22.0µ MPG	No 22.0µ MPG	No 22.0µ MPG	No 22.0µ MPG	No 22.0µ MPG
South	662¢	883¢	1168¢	1412¢	1593¢

Market Indicators	Changes From				
	Week 48	Four Sales Ago Week 44	Start of the Season	Week 48 Last Year	Season Average to Week 48 Last Year
Eastern Market Indicator	1414	+13 (+0.9%)	-10 (-0.7%)	+94 (+7.1%)	+206 (+17.6%)
Western Market Indicator	1490	+17 (+1.2%)	+38 (+2.6%)	+130 (+9.6%)	+203 (+16.6%)

Sale-to-Sale Changes in Average AWEX Merino Micron Price Guides (MPGs)

Micron	16.5	17.0	17.5	18.0	18.5	19.0	19.5	20.0	21.0	22.0	23.0	24.0
Since Last Sale												
Change ¢	-30	+16	-4	-10	-9	-12	-6	-6	+2	0		
Change %	-1.0%	+0.6%	-0.2%	-0.5%	-0.5%	-0.7%	-0.4%	-0.4%	+0.1%	0.0%		
Since Start of the Season												
Change ¢	+168	+201	+148	+75	+29	-24	-37	-16	+15	+73		
Change %	+6.1%	+8.0%	+6.3%	+3.5%	+1.5%	-1.4%	-2.3%	-1.1%	+1.1%	+5.8%		
Since Week 48 Last Year												
Change ¢	+399	+353	+304	+235	+187	+103	+83	+88	+105	+121		
Change %	+15.9%	+14.9%	+14.0%	+12.0%	+10.5%	+6.3%	+5.6%	+6.6%	+8.4%	+10.0%		

Sale-to-Sale Changes in Other Average AWEX Price Guides

Micron	25.0	26.0	28.0	30.0	32.0	MC
Since Last Sale						
Change ¢		-5	-17			-51
Change %		-0.7%	-4.1%			-5.1%
Since Start of the Season						
Change ¢		-120	-97			-15
Change %		-14.8%	-19.6%			-1.6%
Since Week 48 Last Year						
Change ¢		-41	-58			+39
Change %		-5.6%	-12.7%			+4.3%

MC Average Merino Cardings Price Guide

## AWIS WOOL MARKET REVIEW

Week Ending 3 June 2022 (Week 48)

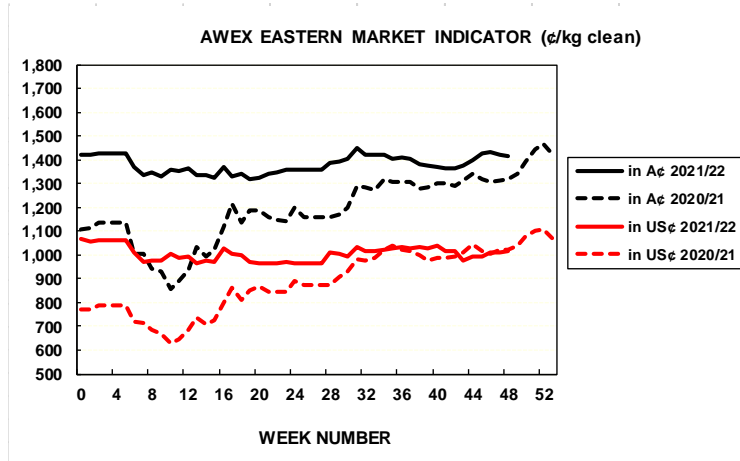
The following tables show the details of this week's sale offering; the expected offerings over the next three sales; the changes in Exchange Rates since the previous sale; and highlights from the March ABS export data.

Details of this Week's Offering and the Comparison with the Previous Sale's Offering							Progressive Changes from Last Year		
Centre	Last Sale	This Sale					All Bales		1 <sup>st</sup> Time Bales
	Offering	Offering	Passed-In	Withdrawn Before Sale	Re-Offered	Bales Sold	Bales	%	%
North	12,908	8,453	13.3%	1.7%	7.9%	7,328	+50,356	+11.8%	+10.6%
South	24,360	20,059	11.9%	1.8%	13.2%	17,669	+70,319	+8.5%	+8.1%
West	7,913	6,360	15.1%	8.7%	20.4%	5,401	+13,885	+4.4%	+4.1%
<b>Australia</b>	<b>45,181</b>	<b>34,872</b>	<b>12.8%</b>	<b>3.1%</b>	<b>13.2%</b>	<b>30,398</b>	<b>+134,152</b>	<b>+8.6%</b>	<b>+8.0%</b>

Next Sale Offerings and Year-on-Year Differences				
Centre	Week 49	Week 50	Week 51	Differences
North	12,596	9,460	9,560	-12.5%
South	20,499	20,418	19,500	-5.4%
West	No Sale	5,450	No Sale	
<b>New Zealand</b>				
<b>Australia</b>	<b>33,095</b>	<b>35,328</b>	<b>29,060</b>	<b>97,483</b>
<b>Differences</b>	<b>-14.2%</b>	<b>-2.6%</b>	<b>-31.6%</b>	<b>-16.9%</b>

Exchange Rates (Reserve Bank)	Last Sale	Day-to-Day Changes					Sale-to-Sale Change	Closing Value	Season Min & Max	
		Fri	Mon	Tues	Wed	Thur			Min	Max
United States	71.07	+0.27	+0.50	+0.03	-0.19	No	+0.61 (+0.9%)	71.68	69.55	75.72
Euro	66.37	-0.01	+0.45	+0.07	+0.05	Sale	+0.56 (+0.8%)	66.93	61.70	69.58

Country	% Share of Australia's Wool Exports by Weight of Wool Shipped			Year-on-Year % Change July to March	
	March 2022	July to March 2021/22	July to March 2020/21	By Weight	By Value
China	82.5%	81.2%	86.8%	+13.9%	+39.0%
Italy	4.4%	4.8%	2.0%	+186.9%	+290.4%
India	4.8%	4.8%	3.3%	+79.4%	+112.4%
Czech Republic	3.3%	3.9%	4.0%	+18.1%	+31.0%
Korea	1.3%	1.5%	2.0%	+15.1%	+27.0%
Egypt	0.4%	0.7%	0.3%	+211.3%	+324.7%
Thailand	0.9%	0.6%	0.4%	+90.1%	+146.2%
Germany	0.6%	0.5%	0.3%	+85.8%	+37.2%
<b>Change all Countries</b>				<b>+21.8%</b>	<b>+51.3%</b>



AVERAGE EMI	
This Year	1378
Last Year	1199
2019/20	1448
2018/19	1939
2017/18	1739

SEASON AVERAGES		
Region	This Year	Diff
North	1467	+202
South	1319	+163
West	1424	+189

THIS YEAR'S EMI	
This Week	1414
First Week	1420
Low (12/01)	1319
High (13/01)	1449

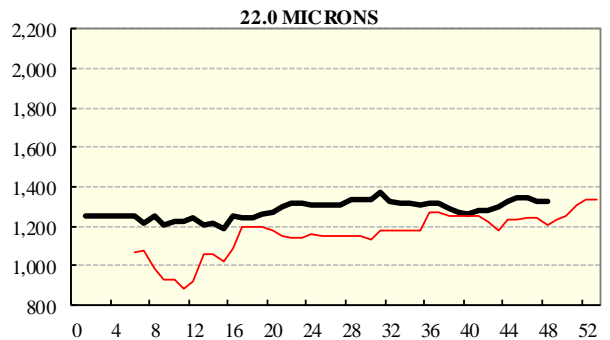
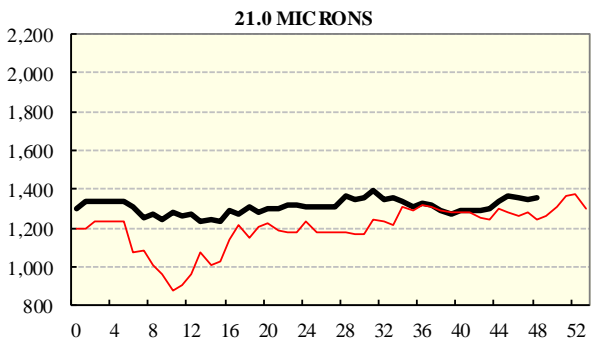
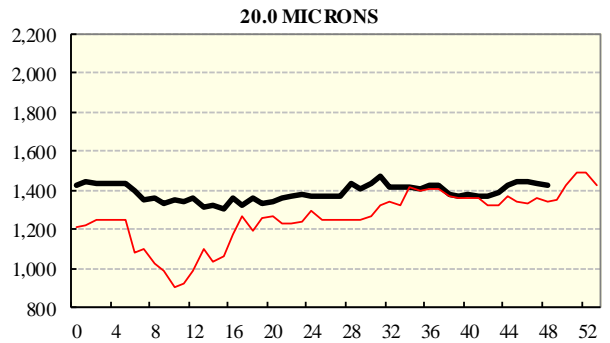
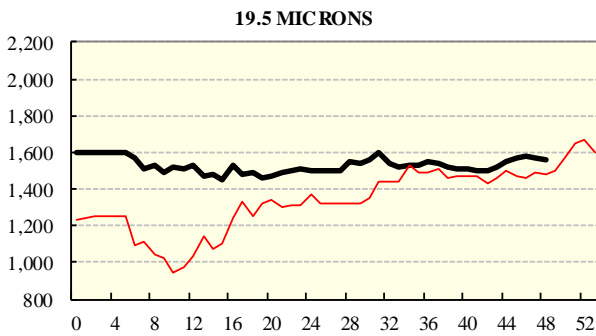
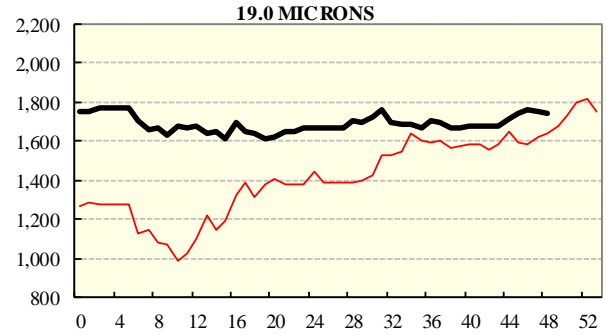
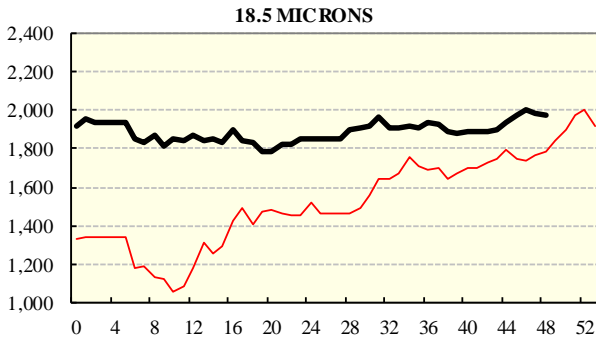
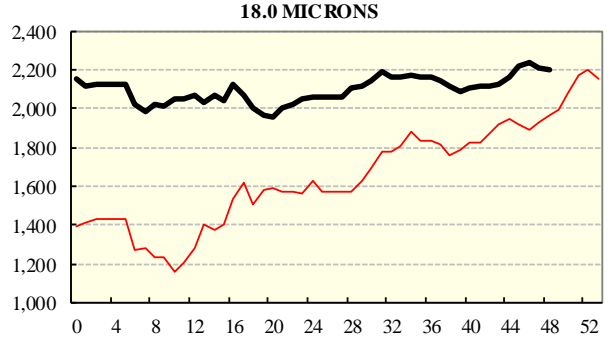
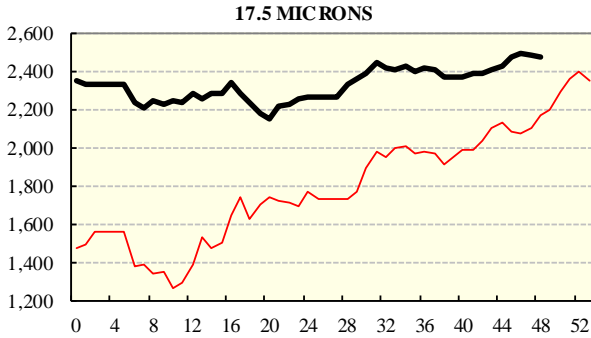
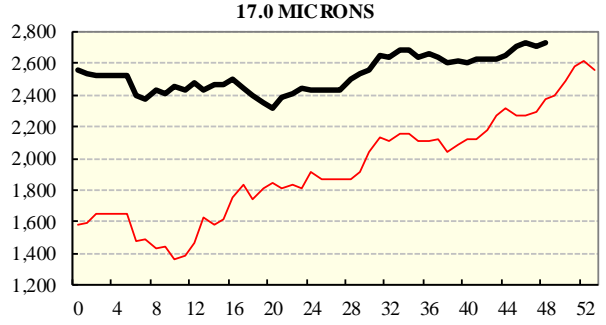
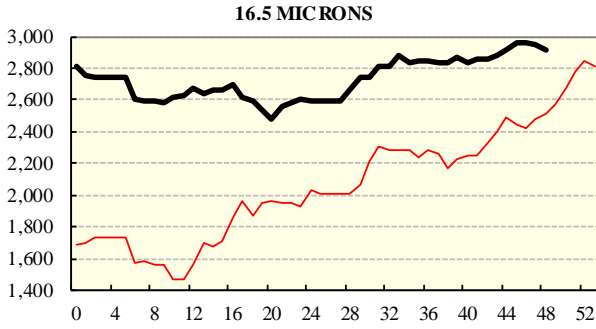
COMPARED WITH WKS 1/2		
Region	This Week	Diff
North	1517	+1
South	1345	-21
West	1490	+38

BALES OFFERED	
This Year	1,702,722
Last Year	1,568,570
Difference	+134,152
% Diff	+8.6%
FIRST OFFERED BALES	
Difference	+8.0%
% of Offering	90.7%

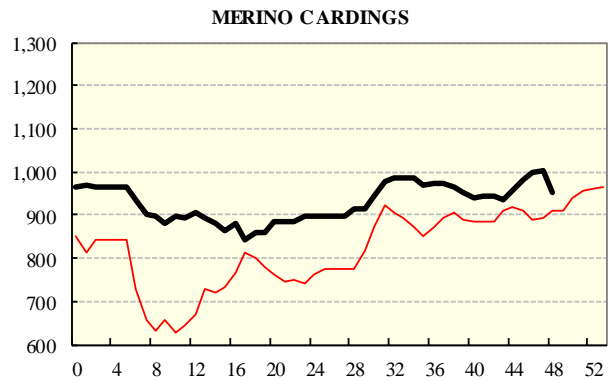
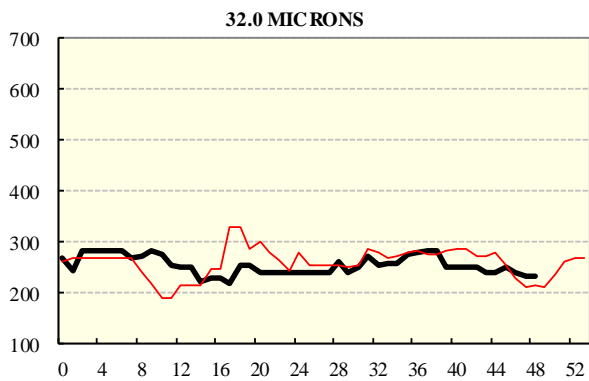
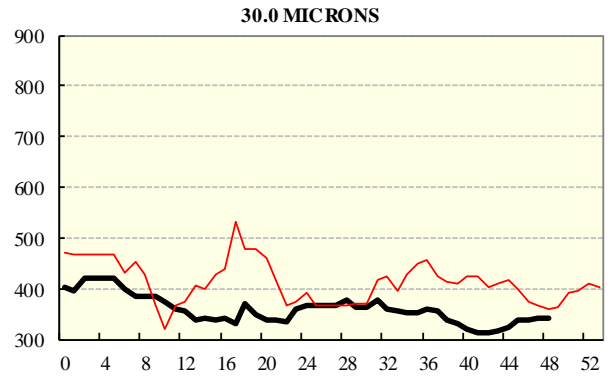
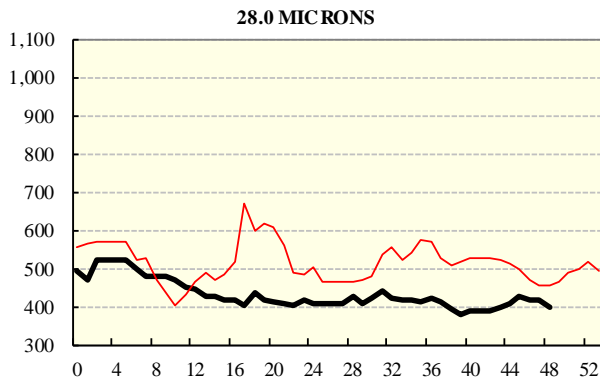
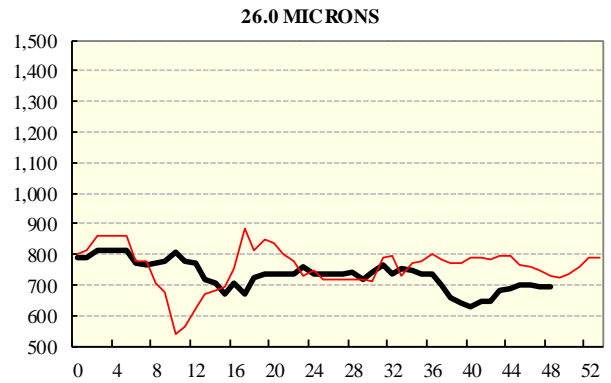
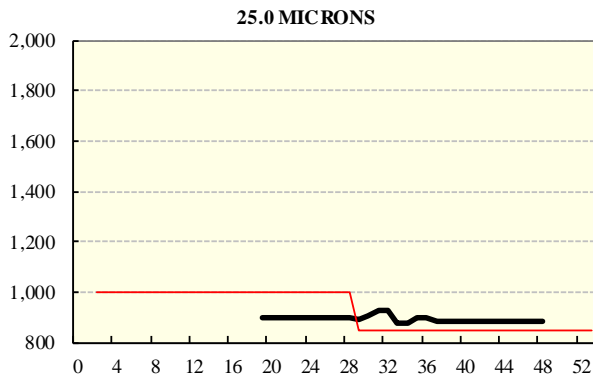
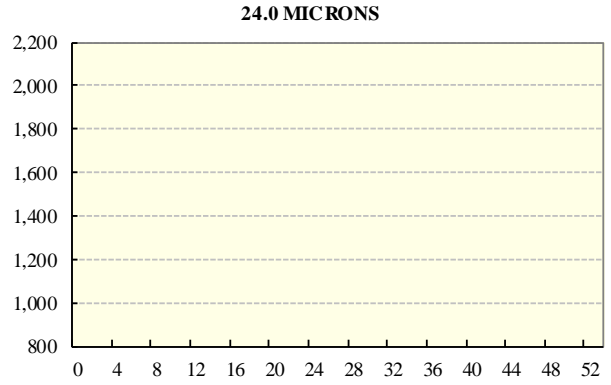
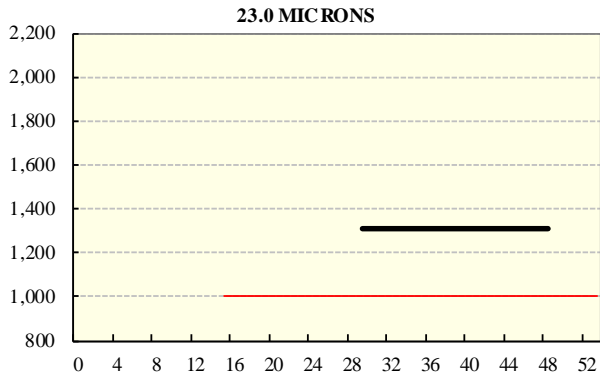
REGION BALES		
This Sale:		
North	8,453	
South	20,059	
West	6,360	
Progressive Totals:		Diff
North	477,705	+11.8%
South	897,266	+8.5%
West	327,751	+4.4%

## **AVERAGE AWEX MICRON PRICE GUIDES**

2021/22 ( black graph line) and 2020/21 ( red graph line)



**AVERAGE AWEX MICRON PRICE GUIDES**  
2021/22 ( black graph line) and 2020/21 (red graph line)



### EASTERN MARKET INDICATOR (EMI) SINCE 1999/00 (¢/kg clean)

(In Australian, United States and European Currencies)

