

AUSTRALIAN WOOL INDUSTRIES SECRETARIAT INC

Unit 9, 42 - 46 Vella Drive
Sunshine West Vic 302
Australia
Tel: 03 9311 0103
Fax: 03 9311 0138

Email: awis@woolindustries.org
Web: www.woolindustries.org
ABN: 30 454 304 967
Reg No: A0041776E



AWIS WOOL MARKET REVIEW

Week Ending 24 June 2022 (Week 51)

The AWEX EMI finished 7¢ higher (+0.5%) in Australian currency and 7¢ lower (-0.7%) in US currency at sales in Sydney and Melbourne in Week 51.

29,807 bales were on offer nationally, compared with 35,572 bales last sale. 10.9% of the offering was passed in after 3.2% of the potential offering was withdrawn prior to sale. 26,570 bales were sold.

AWEX reports that the value of the wool sold was \$45.9 million (\$1,728 per bale), taking the season total to \$2.532 billion (\$1,607 per bale). The number of bales sold at auction this season is now 6.7% greater than in 2020/21.

Day-to-Day and Sale-to-Sale Changes in AWEX Regional Indicators (Week 51)									
Centre	Last Sale		Day-to-Day Changes (Week 51)			Sale-to-Sale Change	Closing Indicator	Sale-to-Sale Changes	
	Week	Indicator	Tuesday	Wednesday	Thursday			US ¢	Euro ¢
Eastern	50	1467	+7	0	No Sale	+7 (+0.5%)	1474	-7	-12
Northern	50	1559	+2	-2	No Sale	0 (0.0%)	1559	-13	-18
Southern	50	1406	+10	+1	No Sale	+11 (+0.8%)	1417	-4	-8
Western	50	1563	No Sale	No Sale	No Sale				

The market opened on a firm basis on Tuesday with good rises among the medium and broad Merinos, but an easing at the fine end. This was followed by further increases at the broad end of the Merinos on Wednesday, together with gains at the fine end.

The US Exchange Rate finished a further 0.82¢ (-1.2%) lower to close at 69.17¢ on Wednesday. This was the lowest closing value for the season.

Buyers for China were dominant, with support from buyers for India and Europe.

Looking ahead, offerings for the coming three sales (Sales 52 this season and Sales 01 and 02 of next season) are expected to be larger, ranging from 42,657 bales to 45,775. The expected quantities for Sales 01 and 02 are forecast to be 13% less than in the first two weeks of the current season.

In other countries, South African sales are in recess this week and are scheduled to resume in mid-August.

Differences in AWEX MPGs	18.5 and 22.0	18.0 and 22.0	17.5 and 22.0	17.0 and 22.0	16.5 and 22.0
North	No 22.0µ MPG	No 22.0µ MPG	No 22.0µ MPG	No 22.0µ MPG	No 22.0µ MPG
South	581¢	868¢	1187¢	1355¢	1598¢

Market Indicators	Week 51	Changes From			
		Four Sales Ago Week 47	Start of the Season	Week 51 Last Year	Season Average to Week 51 Last Year
Eastern Market Indicator	1438	+11 (+0.8%)	+14 (+1.0%)	+95 (+7.1%)	+219 (+18.9%)
Western Market Indicator	No Sale	No Sale	No Sale	No Sale	No Sale

Sale-to-Sale Changes in Average AWEX Merino Micron Price Guides (MPGs)												
Micron	16.5	17.0	17.5	18.0	18.5	19.0	19.5	20.0	21.0	22.0	23.0	24.0
Since Last Sale												
Change ¢	+1	-19	+4	-12	-16	+5	+15	+42	+38	+37		
Change %	+0.0%	-0.7%	+0.2%	-0.5%	-0.8%	+0.3%	+0.9%	+2.7%	+2.6%	+2.6%		
Since Start of the Season												
Change ¢	+251	+240	+238	+136	+83	+62	+73	+136	+161	+189		
Change %	+9.1%	+9.5%	+10.2%	+6.4%	+4.3%	+3.5%	+4.6%	+9.4%	+12.1%	+15.0%		
Since Week 51 Last Year												
Change ¢	+224	+187	+206	+85	+57	+23	+22	+88	+136	+142		
Change %	+8.1%	+7.3%	+8.7%	+3.9%	+2.9%	+1.3%	+1.3%	+5.9%	+10.0%	+10.9%		

Sale-to-Sale Changes in Other Average AWEX Price Guides						
Micron	25.0	26.0	28.0	30.0	32.0	MC
Since Last Sale						
Change ¢			-2	0	+7	+1
Change %			-0.3%	0.0%	+2.1%	+0.1%
Since Start of the Season						
Change ¢			-129	-80	-64	-36
Change %			-15.9%	-16.2%	-15.7%	-3.7%
Since Week 51 Last Year						
Change ¢			-76	-81	-53	-26
Change %			-10.0%	-16.3%	-13.4%	-2.7%

MC Average Merino Cardings Price Guide

AWIS WOOL MARKET REVIEW

Week Ending 24 June 2022 (Week 51)

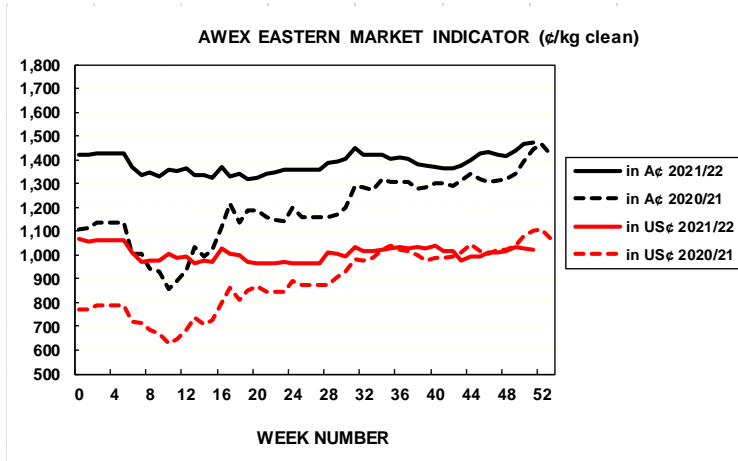
The following tables show the details of this week's sale offering; the expected offerings over the next three sales; the changes in Exchange Rates since the previous sale; and highlights from the April ABS export data.

Details of this Week's Offering and the Comparison with the Previous Sale's Offering							Progressive Changes from Last Year		
Centre	Last Sale	This Sale					All Bales		1 st Time Bales
	Offering	Offering	Passed-In	Withdrawn Before Sale	Re-Offered	Bales Sold	Bales	%	%
North	9,254	11,677	12.1%	2.7%	9.0%	10,264	+47,829	+10.3%	+9.0%
South	17,259	18,130	10.1%	3.5%	9.2%	16,306	+60,257	+6.8%	+6.4%
West	9,059						+5,576	+1.7%	+1.6%
Australia	35,572	29,807	10.9%	3.2%	9.2%	26,570	+113,254	+6.7%	+6.2%

Next Sale Offerings and Year-on-Year Differences				
Centre	Week 52	Week 01	Week 02	Differences
North	11,879	14,600	13,200	-16.1%
South	21,644	20,135	22,357	-2.4%
West	11,480	11,040	7,100	-11.9%
New Zealand				
Australia	45,003	45,775	42,657	133,435
Differences	+35.0%	-10.7%	-13.0%	-0.1%

Exchange Rates (Reserve Bank)	Last Sale	Day-to-Day Changes					Sale-to-Sale Change	Closing Value	Season Min & Max	
		Fri	Mon	Tues	Wed	Thur			Min	Max
United States	69.99	+0.13	-0.45	-0.07	-0.43	No	-0.82 (-1.2%)	69.17	69.17	75.72
Euro	67.10	-0.44	-0.50	+0.01	-0.22	Sale	-1.15 (-1.7%)	65.95	61.70	69.58

Country	% Share of Australia's Wool Exports by Weight of Wool Shipped			Year-on-Year % Change July to April	
	April 2022	July to April 2021/22	July to April 2020/21	By Weight	By Value
China	85.1%	81.6%	87.1%	+11.1%	+33.2%
India	3.6%	4.7%	3.4%	+65.9%	+96.2%
Italy	2.5%	4.6%	1.9%	+181.7%	+281.2%
Czech Republic	4.3%	3.9%	3.7%	+25.6%	+38.7%
Korea	1.6%	1.5%	1.6%	+11.2%	+20.5%
Egypt	0.4%	0.7%	0.3%	+191.1%	+290.2%
Thailand	0.7%	0.6%	0.4%	+83.3%	+127.3%
Germany	0.1%	0.4%	0.3%	+54.3%	+18.0%
Change all Countries				+18.6%	+44.8%



AVERAGE EMI	
This Year	1384
Last Year	1199
2019/20	1448
2018/19	1939
2017/18	1739

SEASON AVERAGES		
Region	This Year	Diff
North	1473	+208
South	1325	+168
West	1428	+192

THIS YEAR'S EMI	
This Week	1474
First Week	1420
Low (12/01)	1319
High (10/01)	1474

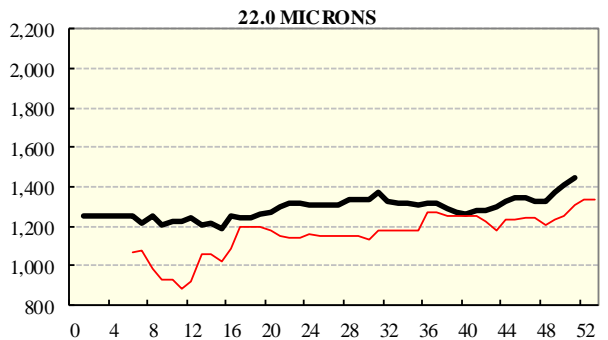
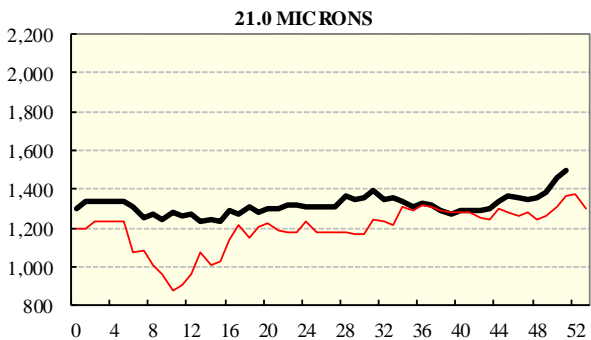
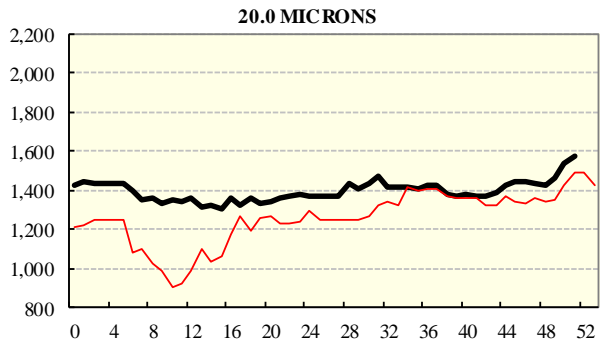
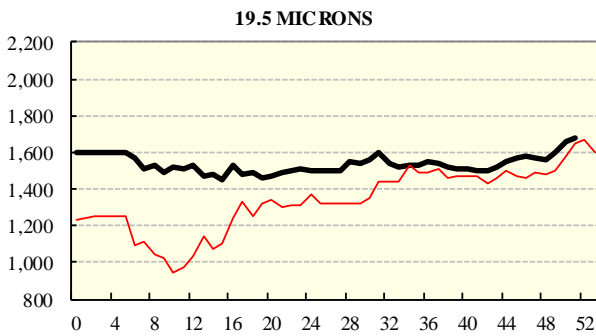
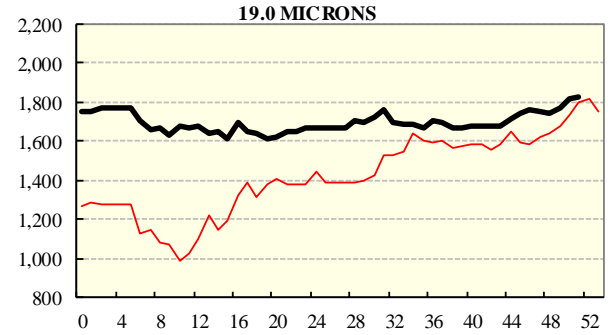
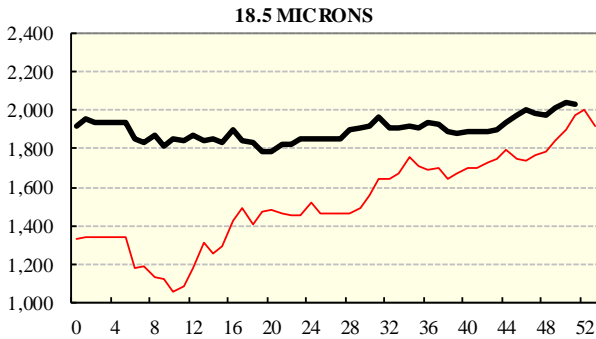
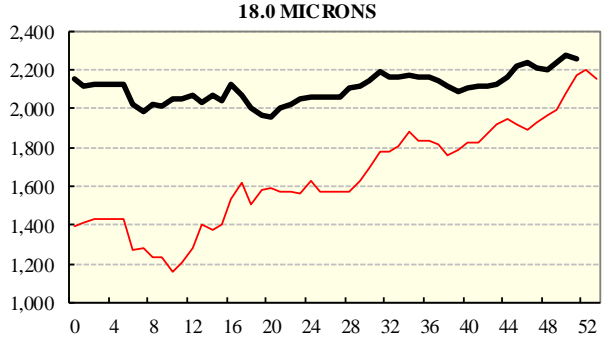
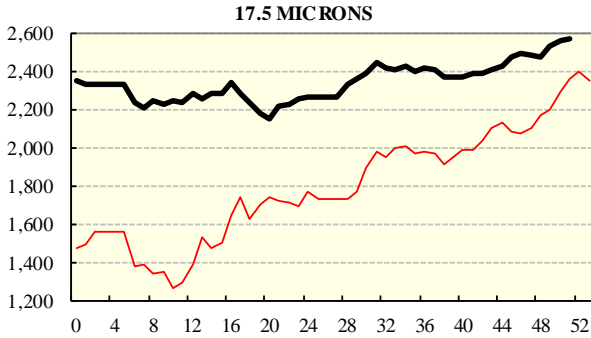
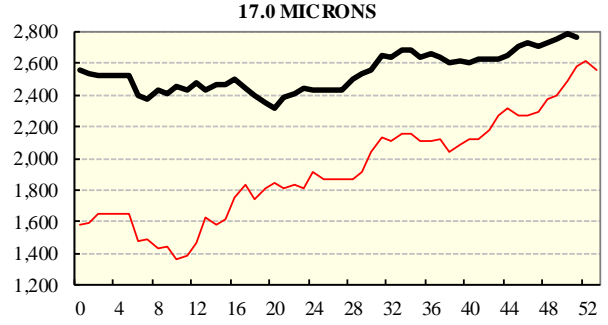
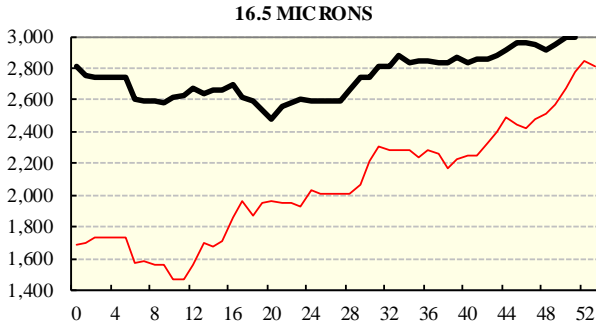
COMPARED WITH WKS 1/2		
Region	This Week	Diff
North	1559	+43
South	1417	+51
West	1563	

BALES OFFERED	
This Year	1,799,198
Last Year	1,685,944
Difference	+113,254
% Diff	+6.7%
FIRST OFFERED BALES	
Difference	+6.2%
% of Offering	90.7%

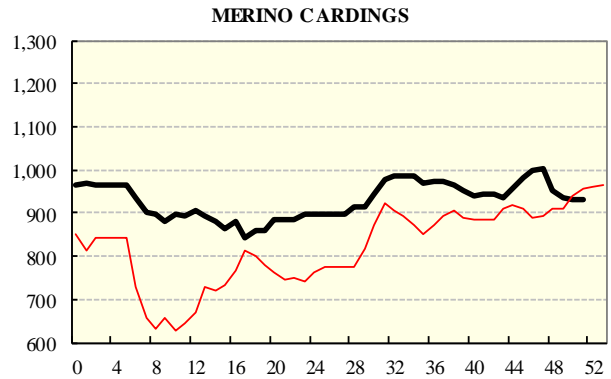
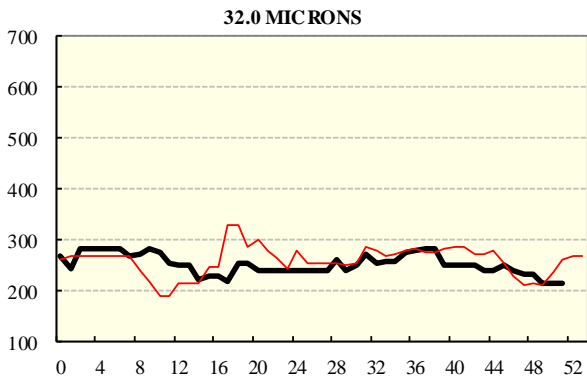
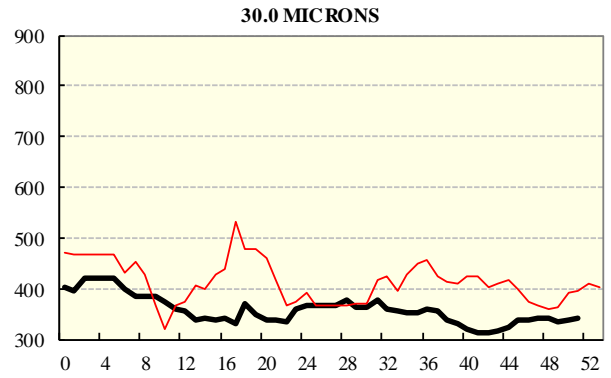
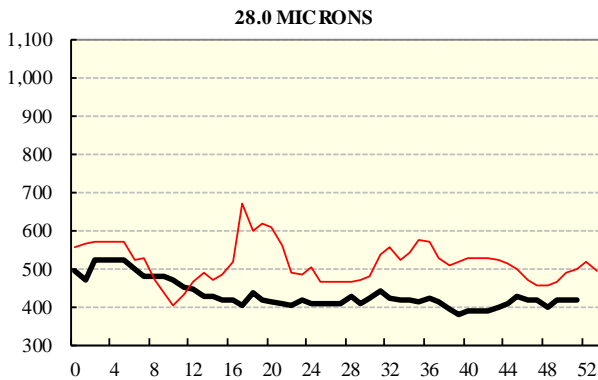
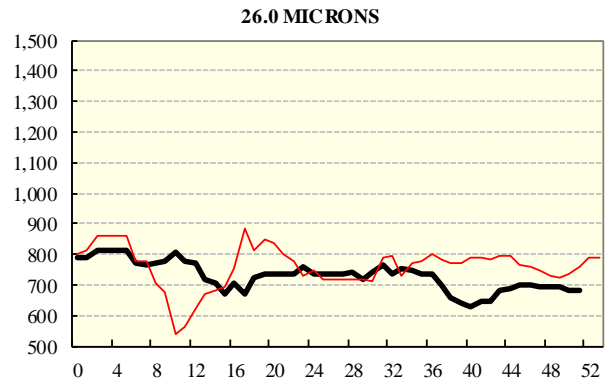
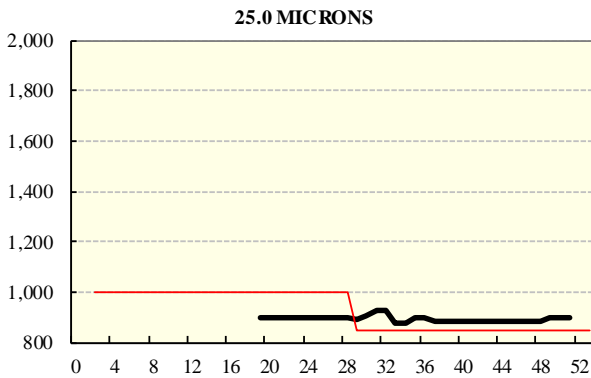
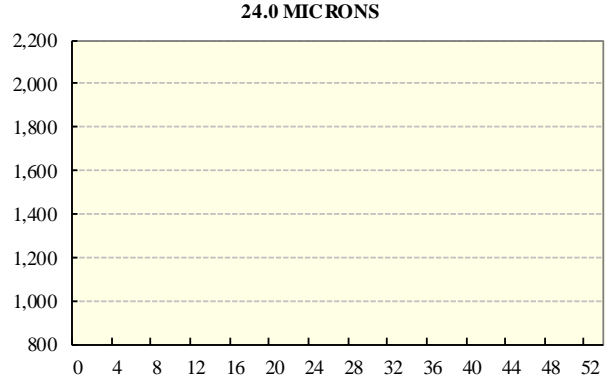
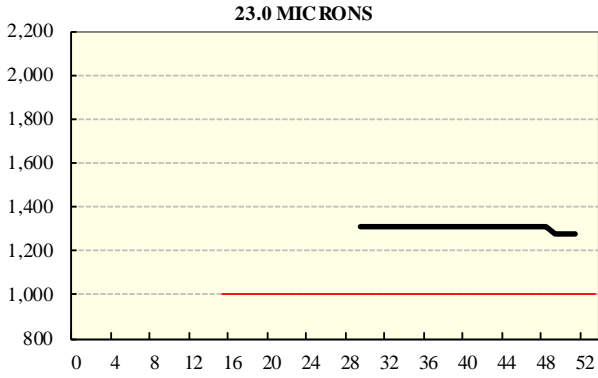
REGION BALES		
This Sale:		
North	11,677	
South	18,130	
West		
Progressive Totals:		Diff
North	511,301	+10.3%
South	951,087	+6.8%
West	336,810	+1.7%

AVERAGE AWEX MICRON PRICE GUIDES

2021/22 (black graph line) and 2020/21 (red graph line)



AVERAGE AWEX MICRON PRICE GUIDES
2021/22 (black graph line) and 2020/21 (red graph line)



EASTERN MARKET INDICATOR (EMI) SINCE 1999/00 (¢/kg clean)

(In Australian, United States and European Currencies)

