

AUSTRALIAN WOOL INDUSTRIES SECRETARIAT INC

Unit 9, 42 - 46 Vella Drive
Sunshine West Vic 3020
Australia
Tel: 03 9311 0103
Fax: 03 9311 0138

Email: awis@woolindustries.org
Web: www.woolindustries.org
ABN: 30 454 304 967
Reg No: A0041776E



AWIS WOOL MARKET REVIEW

Week Ending 10 June 2022 (Week 49)

It was a good week with the AWEX EMI finishing 24¢ higher (+1.7%) in Australian currency and 22¢ higher (+2.2%) in US currency at sales in Sydney and Melbourne in Week 49.

In another smaller sale, 31,097 bales were on offer nationally, compared with 34,872 bales last sale. 9.6% of the offering was passed in after 2.2% of the potential offering was withdrawn prior to sale. 28,118 bales were sold.

AWEX reports that the value of the wool sold was \$45.7 million (\$1,625 per bale), taking the season total to \$2.430 billion (\$1,604 per bale).

The number of bales sold at auction this season is now 6.8% greater than in 2020/21.

Day-to-Day and Sale-to-Sale Changes in AWEX Regional Indicators (Week 49)									
Centre	Last Sale		Day-to-Day Changes (Week 49)			Sale-to-Sale Change	Closing Indicator	Sale-to-Sale Changes	
	Week	Indicator	Tuesday	Wednesday	Thursday			US ¢	Euro ¢
Eastern	48	1414	+9	+15	No Sale	+24 (+1.7%)	1438	+22	+23
Northern	48	1517	+7	+16	No Sale	+23 (+1.5%)	1540	+22	+23
Southern	48	1345	+11	+14	No Sale	+25 (+1.9%)	1370	+23	+23
Western	48	1490	No Sale	No Sale	No Sale				

It was a good market with rises across the Merino types and Fibre Diameter ranges on both days. Merino types did slightly better at the broad end. Crossbreds, gained at 28 microns, but otherwise showed little change.

The US Exchange Rate finished 0.34¢ (0.5%) higher to close at 72.02¢ on Wednesday. It is now at its highest level since the last sale before Easter.

As usual, buyers for China were dominant.

Looking ahead, offerings for the coming three sales are currently expected to range from 29,880 bales to 38,223 bales and to be 5.8% less than in the same period last year. The forecast progressive difference to Week 52 is +7.0%.

Differences in AWEX MPGs	18.5 and 22.0	18.0 and 22.0	17.5 and 22.0	17.0 and 22.0	16.5 and 22.0
North	No 22.0µ MPG	No 22.0µ MPG	No 22.0µ MPG	No 22.0µ MPG	No 22.0µ MPG
South	636¢	869¢	1194¢	1407¢	1591¢

Market Indicators	Changes From				
	Week 49	Four Sales Ago Week 45	Start of the Season	Week 49 Last Year	Season Average to Week 49 Last Year
Eastern Market Indicator	1438	+11 (+0.8%)	+14 (+1.0%)	+95 (+7.1%)	+219 (+18.9%)
Western Market Indicator	No Sale	No Sale	No Sale	No Sale	No Sale

Sale-to-Sale Changes in Average AWEX Merino Micron Price Guides (MPGs)												
Micron	16.5	17.0	17.5	18.0	18.5	19.0	19.5	20.0	21.0	22.0	23.0	24.0
Since Last Sale												
Change ¢	+34	+31	+56	+36	+40	+29	+31	+37	+35	+44		
Change %	+1.2%	+1.1%	+2.3%	+1.6%	+2.0%	+1.7%	+2.0%	+2.6%	+2.6%	+3.3%		
Since Start of the Season												
Change ¢	+202	+232	+204	+111	+69	+5	-6	+21	+50	+117		
Change %	+7.4%	+9.2%	+8.8%	+5.2%	+3.5%	+0.3%	-0.4%	+1.5%	+3.7%	+9.3%		
Since Week 49 Last Year												
Change ¢	+384	+360	+337	+239	+177	+91	+93	+113	+127	+142		
Change %	+15.0%	+15.0%	+15.3%	+12.0%	+9.6%	+5.4%	+6.2%	+8.4%	+10.1%	+11.5%		

Sale-to-Sale Changes in Other Average AWEX Price Guides						
Micron	25.0	26.0	28.0	30.0	32.0	MC
Since Last Sale						
Change ¢		+1	+17			-15
Change %		+0.1%	+4.3%			-1.6%
Since Start of the Season						
Change ¢		-119	-80	-74	-50	-30
Change %		-14.7%	-16.2%	-18.2%	-18.9%	-3.1%
Since Week 49 Last Year						
Change ¢		-34	-47	-31	+2	+25
Change %		-4.7%	-10.2%	-8.5%	+0.9%	+2.7%

MC Average Merino Cardings Price Guide

AWIS WOOL MARKET REVIEW

Week Ending 10 June 2022 (Week 49)

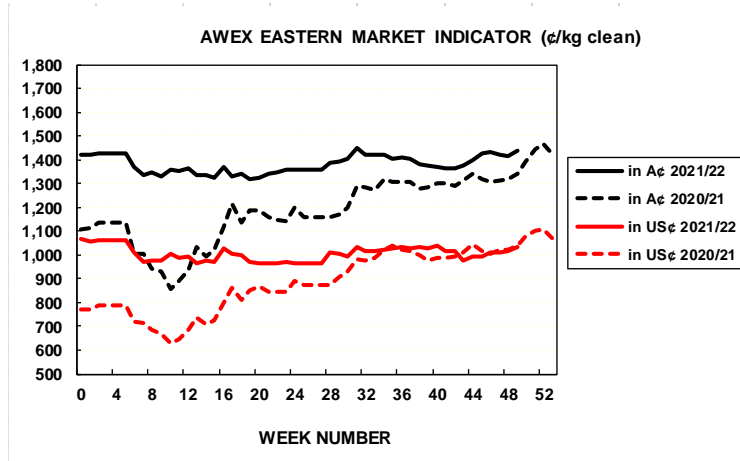
The following tables show the details of this week's sale offering; the expected offerings over the next three sales; the changes in Exchange Rates since the previous sale; and highlights from the April ABS export data.

Details of this Week's Offering and the Comparison with the Previous Sale's Offering							Progressive Changes from Last Year		
Centre	Last Sale	This Sale					All Bales		1 st Time Bales
	Offering	Offering	Passed-In	Withdrawn Before Sale	Re-Offered	Bales Sold	Bales	%	%
North	8,453	12,665	11.0%	2.0%	9.8%	11,267	+57,687	+14.8%	+13.4%
South	20,059	18,432	8.6%	2.4%	11.3%	16,851	+75,167	+10.0%	+9.7%
West	6,360						+13,559	+4.7%	+4.3%
Australia	34,872	31,097	9.6%	2.2%	10.7%	28,118	+146,005	+10.2%	+9.6%

Next Sale Offerings and Year-on-Year Differences				
Centre	Week 50	Week 51	Week 52	Differences
North	9,752	10,180	9,750	-22.6%
South	19,687	19,700	21,161	-4.5%
West	8,784	No Sale	6,550	
New Zealand				
Australia	38,223	29,880	37,461	105,564
Differences	+5.3%	-29.7%	+12.4%	-5.8%

Exchange Rates (Reserve Bank)	Last Sale	Day-to-Day Changes					Sale-to-Sale Change	Closing Value	Season Min & Max	
		Fri	Mon	Tues	Wed	Thur			Min	Max
United States	71.68	+0.89	-0.56	-0.24	+0.25	-0.26	+0.34 (+0.5%)	72.02	69.55	75.72
Euro	66.93	+0.55	-0.36	+0.11	+0.15	-0.43	+0.45 (+0.7%)	67.38	61.70	69.58

Country	% Share of Australia's Wool Exports by Weight of Wool Shipped			Year-on-Year % Change	
	April 2022	July to April 2021/22	July to April 2020/21	July to April By Weight	July to April By Value
China	85.1%	81.6%	87.1%	+11.1%	+33.2%
India	3.6%	4.7%	3.4%	+65.9%	+96.2%
Italy	2.5%	4.6%	1.9%	+181.7%	+281.2%
Czech Republic	4.3%	3.9%	3.7%	+25.6%	+38.7%
Korea	1.6%	1.5%	1.6%	+11.2%	+20.5%
Egypt	0.4%	0.7%	0.3%	+191.1%	+290.2%
Thailand	0.7%	0.6%	0.4%	+83.3%	+127.3%
Germany	0.1%	0.4%	0.3%	+54.3%	+18.0%
Change all Countries				+18.6%	+44.8%



AVERAGE EMI	
This Year	1380
Last Year	1199
2019/20	1448
2018/19	1939
2017/18	1739

SEASON AVERAGES		
Region	This Year	Diff
North	1469	+204
South	1321	+164
West	1424	+189

THIS YEAR'S EMI	
This Week	1438
First Week	1420
Low (12/01)	1319
High (13/01)	1449

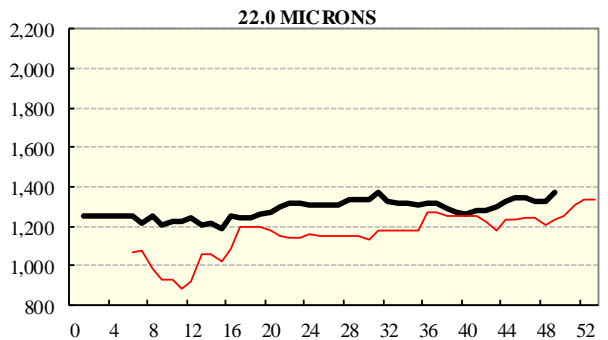
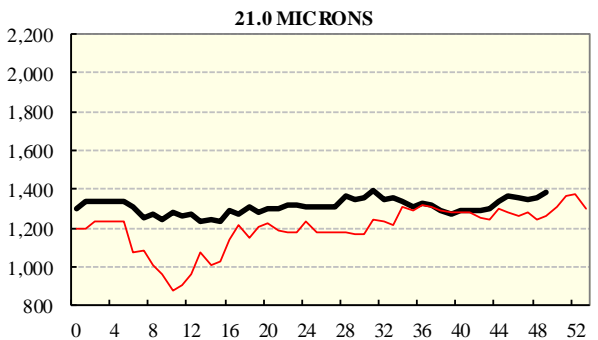
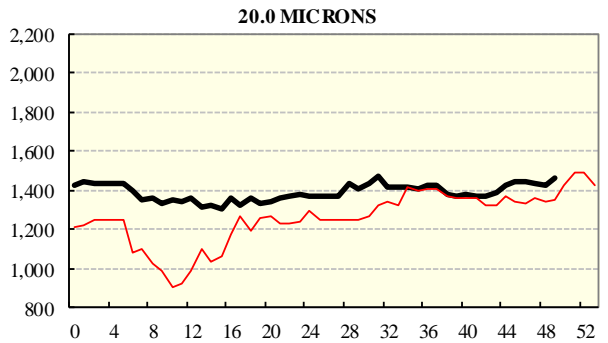
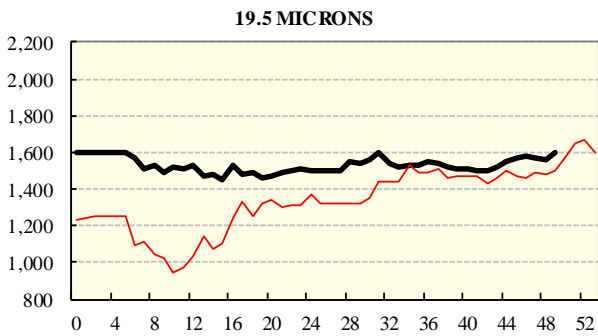
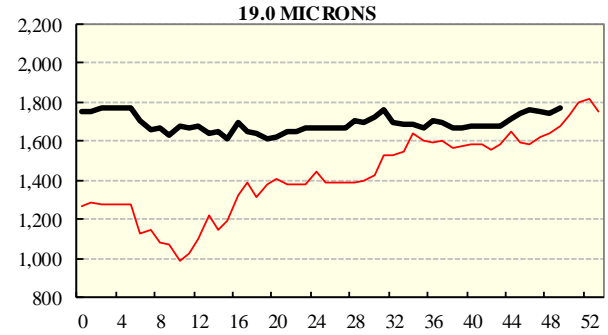
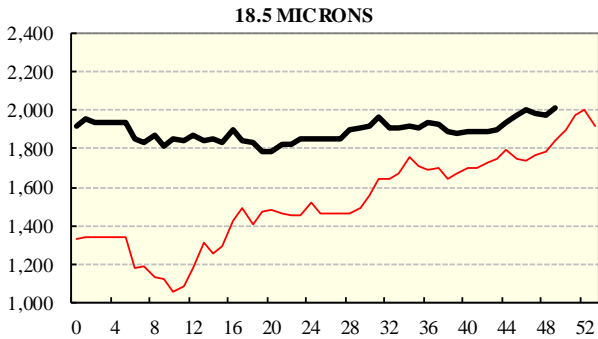
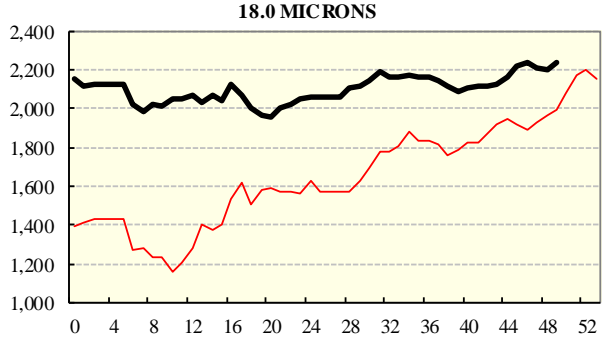
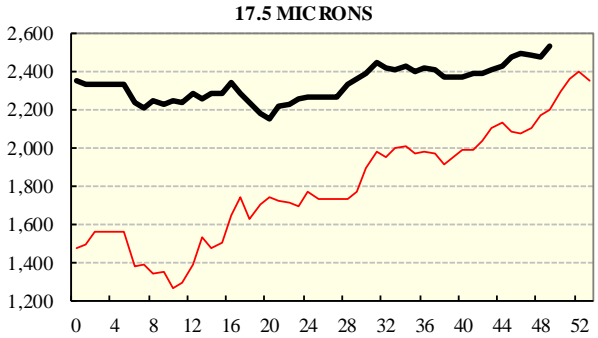
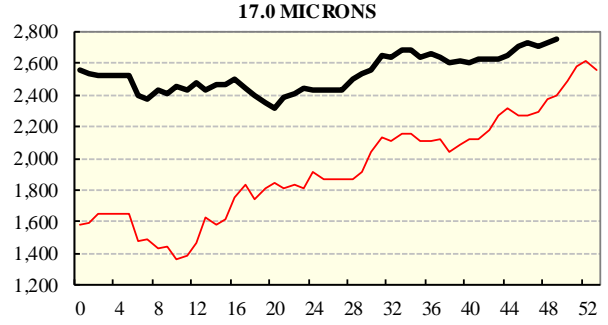
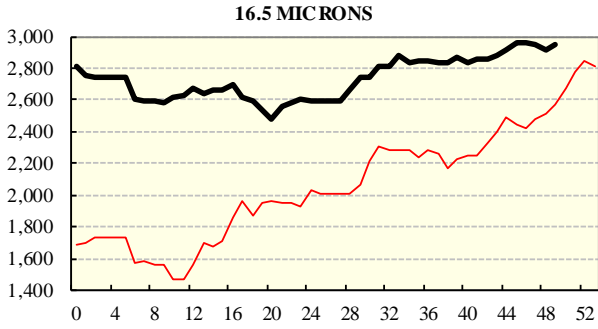
COMPARED WITH WKS 1/2		
Region	This Week	Diff
North	1540	+24
South	1370	+4
West	1490	

BALES OFFERED	
This Year	1,733,819
Last Year	1,433,002
Difference	+300,817
% Diff	+21.0%
FIRST OFFERED BALES	
Difference	+9.6%
% of Offering	90.7%

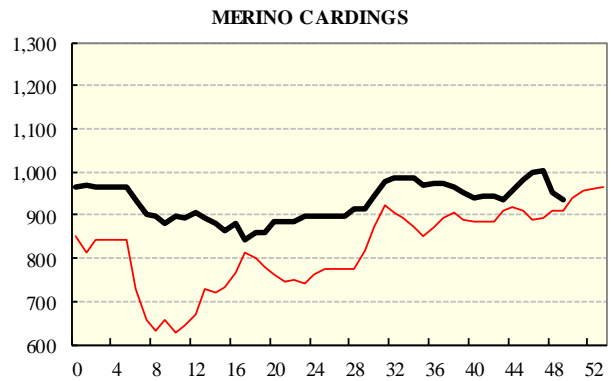
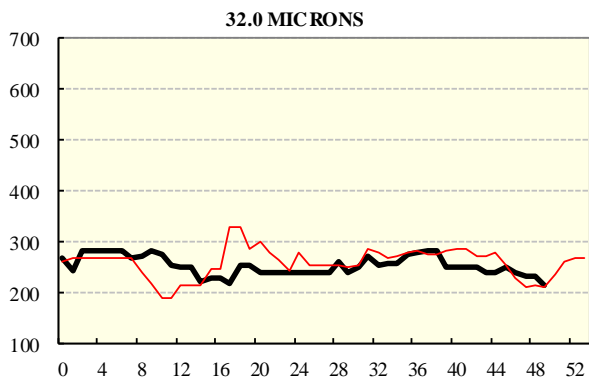
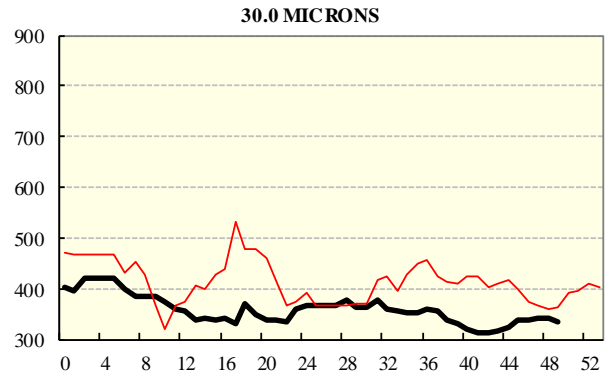
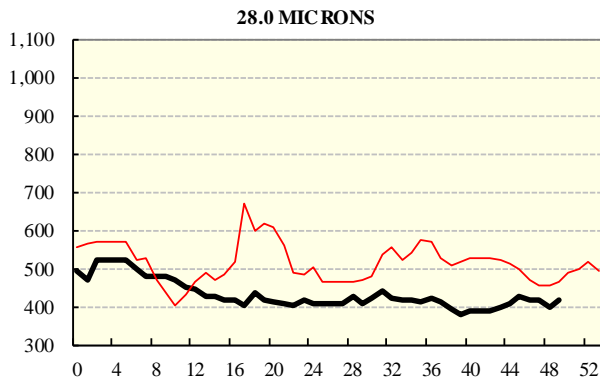
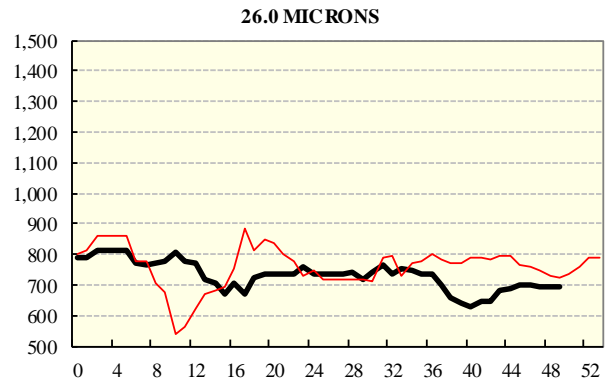
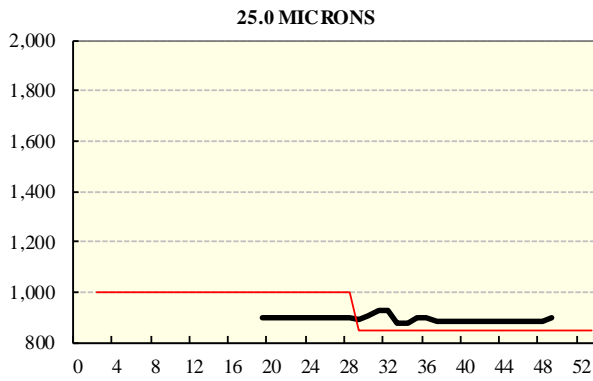
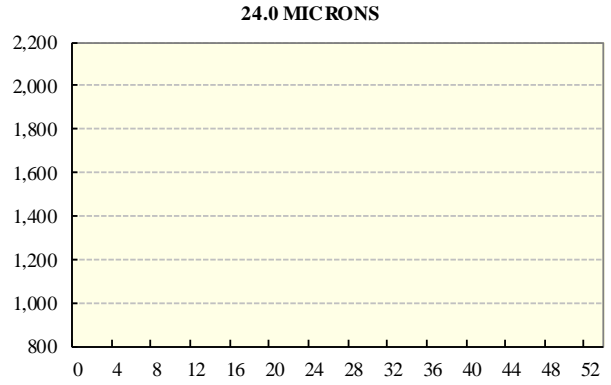
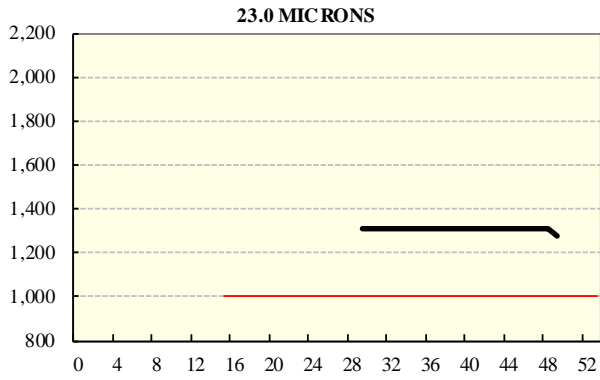
REGION BALES		
This Sale:		
North	12,665	
South	18,432	
West		
Progressive Totals:		Diff
North	490,370	+25.8%
South	915,698	+21.8%
West	327,751	+12.6%

AVERAGE AWEX MICRON PRICE GUIDES

2021/22 (black graph line) and 2020/21 (red graph line)



AVERAGE AWEX MICRON PRICE GUIDES 2021/22 (black graph line) and 2020/21 (red graph line)



EASTERN MARKET INDICATOR (EMI) SINCE 1999/00 (¢/kg clean)

(In Australian, United States and European Currencies)

