

AUSTRALIAN WOOL INDUSTRIES SECRETARIAT INC

Unit 9, 42 - 46 Vella Drive
Sunshine West
Australia
Tel: 03 9311 0103
Fax: 03 9311 0138

Email: awis@woolindustries.org
Web: www.woolindustries.org
ABN: 30 454 304 967
Reg No: A0041776E



AWIS WOOL MARKET REVIEW

Week Ending 29 November 2019 (Week 22).

The AWEX EMI finished at 1530¢, 25¢ lower (-1.6%) in Australian currency and 22¢ lower (-2.1%) in US currency at sales in Sydney, Melbourne and Fremantle in Week 22.

37,804 bales were on offer nationally, compared with 35,719 bales last sale. 14.6% of the offering was passed in after 5.8% of the potential offering was withdrawn prior to sale.

AWEX reports that the value of the wool sold was \$53.7 million (\$1,664 per bale), taking the season total to \$872.7 million (\$1,742 per bale). The number of bales sold at auction this season is now 18.2% less than in 2018/19.

Day-to-Day and Sale-to-Sale Changes in AWEX Regional Indicators (Week 22)									
Centre	Last Sale		Day-to-Day Changes (Week 22)			Sale-to-Sale Change	Closing Indicator	Sale-to-Sale Changes	
	Week	Indicator	Tuesday	Wednesday	Thursday			US ¢	Euro ¢
Eastern	21	1555	No Sale	-16	-9	-25 (-1.6%)	1530	-22	-14
Northern	21	1591	No Sale	-18	-12	-30 (-1.9%)	1561	-25	-17
Southern	21	1532	No Sale	-14	-7	-21 (-1.4%)	1511	-19	-12
Western	21	1655	No Sale	-19	+4	-15 (-0.9%)	1640	-16	-8

The market eased again this week, with losses across all Merino and crossbred types and micron ranges. Locks were the only types that held last week's prices, resulting in a smaller movement in the Oddments Price Guide. Growers reacted to the second successive week's downward movement by passing-in a greater than average proportion of the offering.

The US Exchange Rate finished 0.34¢ (-0.5%) lower to close at 67.63¢ on Thursday.

Buyers for China were dominant, with support from buyers for India and Europe

In other countries, the South African Cape Wools Indicator was down by 0.1% since last week against a 0.2% depreciation of the Rand against the US Dollar and a 0.5% appreciation against the Euro.

Looking ahead, the sales lose their synchronisation with last year when a sale as a sale will be held in Week 25 this year, but not last year. Offerings in sales 23 and 24 are expected to be 41,274 bales range and 37,278 bales and to be 3.6% less than in the same period last year. The forecast progressive difference to Week 24 is -11.9%.

The size of the weekly offerings continues to move closer to the previous year's volumes. The number of bales offered in the last four weeks was up by 8.2%, compared with a figure of -18.1% from Weeks 01 to Week 18. AWH advise that they are very busy handling the current level of receivals.

Differences in AWEX MPGs	18.5 and 22.0	18.0 and 22.0	17.5 and 22.0	17.0 and 22.0	16.5 and 22.0
North	No 22.0µ MPG	No 22.0µ MPG	No 22.0µ MPG	No 22.0µ MPG	No 22.0µ MPG
South	95¢	149¢	228¢	268¢	346¢

Market Indicator	Changes From			
	Four Sales Ago Week 18	Start of the Season	Week 22 Last Year	Season Average to Week 22 Last Year
Eastern Market Indicator	-64 (-4.0%)	-209 (-12.0%)	-330 (-17.7%)	-420 (-21.3%)
Western Market Indicator	-47 (-2.8%)	-241 (-12.8%)	-369 (-18.4%)	-467 (-22.0%)

Sale-to-Sale Changes in Average AWEX Merino Micron Price Guides (MPGs)												
Micron	16.5	17.0	17.5	18.0	18.5	19.0	19.5	20.0	21.0	22.0	23.0	24.0
Since Last Sale												
Change ¢	-16	-12	-6	-28	-42	-43	-36	-26	-11			
Change %	-0.8%	-0.6%	-0.3%	-1.5%	-2.3%	-2.4%	-2.0%	-1.5%	-0.6%			
Since Start of the Season												
Change ¢	-121	-170	-202	-261	-256	-295	-309	-320	-314	-334		
Change %	-5.6%	-7.9%	-9.5%	-12.3%	-12.5%	-14.5%	-15.2%	-15.8%	-15.5%	-16.4%		
Since Same Week Last Year												
Change ¢	-462	-483	-485	-488	-443	-441	-433	-432	-418	-423		
Change %	-18.5%	-19.7%	-20.1%	-20.8%	-19.8%	-20.2%	-20.1%	-20.2%	-19.7%	-19.9%		

Sale-to-Sale Changes in Other Average AWEX Price Guides						
Micron	25.0	26.0	28.0	30.0	32.0	MC
Since Last Sale						
Change ¢			-33	-42	-10	-10
Change %			-2.8%	-4.7%	-1.5%	-2.1%
Since Start of the Season						
Change ¢			-179	-195	-171	-129
Change %			-13.3%	-18.7%	-20.2%	-21.9%
Since Same Week Last Year						
Change ¢			-182	-88	-66	-113
Change %			-13.5%	-9.4%	-8.9%	-9.5%

MC Average Merino Cardings Price Guide

AUSTRALIAN WOOL INDUSTRIES SECRETARIAT INC

Unit 9, 42 - 46 Vella Drive
Sunshine West Vic 3020
Australia
Tel: 03 9311 0103
Fax: 03 9311 0138



Email: awis@woolindustries.org
Web: www.woolindustries.org
ABN: 30 454 304 967
Reg No: A0041776E

AWIS WOOL MARKET REVIEW Week Ending 29 November 2019 (Week 22)

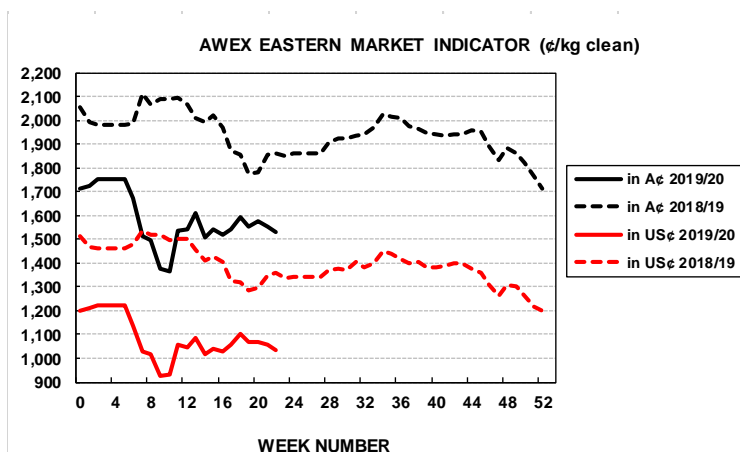
The following tables show the details of this week's sale offering; the expected offerings over the next three sales; the changes in Exchange Rates since the previous sale; and highlights from the September ABS export data.

Details of this Week's Offering and the Comparison with the Previous Sale's Offering							Progressive Changes from Last Year		
Centre	Last Sale	This Sale					All Bales		1 st Time Bales
	Offering	Offering	Passed-In	Withdrawn Before Sale	Re-Offered	Bales Sold	Bales	%	%
North	9,666	10,237	12.7%	3.8%	6.9%	8,938	-26,801	-13.3%	-17.0%
South	17,535	20,292	14.1%	7.2%	6.8%	17,434	-57,232	-16.0%	-19.6%
West	8,518	7,275	19.0%	4.9%	11.3%	5,895	-4,585	-3.7%	-11.2%
Australia	35,719	37,804	14.6%	5.8%	7.7%	32,267	-88,618	-13.0%	-17.4%

Next Sale Offerings and Year-on-Year Differences				
Centre	Week 23	Week 24	Week 25	Differences
North	10,163	11,120	10,720	-2.8%
South	23,158	20,943	19,058	-0.1%
West	7,953	7,450	7,500	-11.3%
New Zealand	1,000			
Australia	41,274	39,513	37,278	118,065
Differences	+10.3%	-14.1%		+41.5%

Exchange Rates (Reserve Bank)	Last Sale	Day-to-Day Changes					Sale-to-Sale Change	Closing Value	Season Min & Max	
		Fri	Mon	Tues	Wed	Thur			Min	Max
United States	67.97	-0.09	+0.06	-0.12	-0.05	-0.14	-0.34 (-0.5%)	67.63	67.17	70.36
Euro	61.37	-0.02	+0.29	-0.06	-0.04	-0.10	+0.07 (+0.1%)	61.44	60.42	62.48

Country	% Share of Australia's Wool Exports by Weight of Wool Shipped			Year-on-Year % Change July to September	
	September 2019	July to September 2019/20	July to September 2018/19	By Weight	By Value
China	74.4%	74.2%	74.6%	-26.0%	-42.6%
Italy	7.3%	7.7%	6.4%	-9.8%	-28.3%
India	5.5%	5.6%	6.4%	-34.6%	-44.9%
Czech Republic	2.7%	3.3%	3.5%	-29.5%	-47.2%
Korea	2.2%	2.4%	3.1%	-43.7%	-52.7%
Egypt	2.5%	1.9%	1.0%	+41.6%	+13.6%
Thailand	0.9%	0.8%	1.3%	-52.6%	-63.6%
Germany	0.6%	0.5%	0.3%	+47.3%	+22.7%
Change all Countries				-25.7%	-41.4%



AVERAGE EMI	
This Year	1553
Last Year	1939
2017/18	1739
2016/17	1408
2015/16	1254

SEASON AVERAGES		
Region	This Year	Diff
North	1580	-402
South	1535	-377
West	1654	-435

THIS YEAR'S EMI	
This Week	1530
First Week	1723
Low (10/01)	1365
High (11/01)	1754

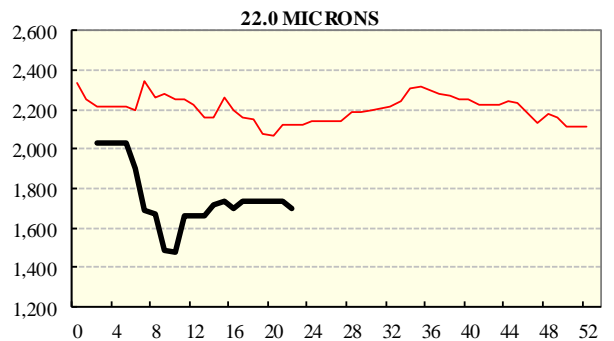
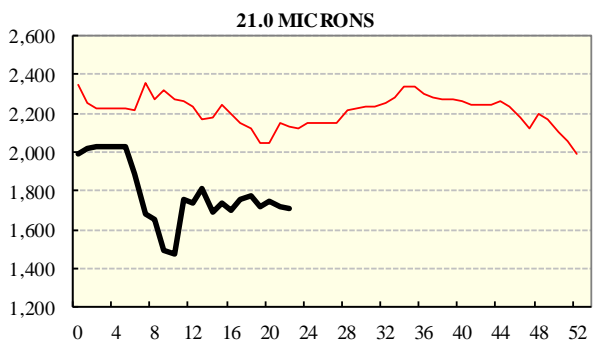
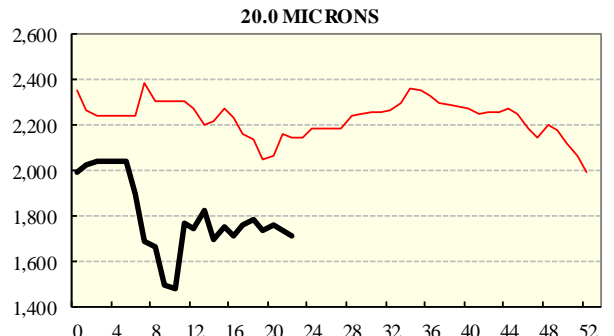
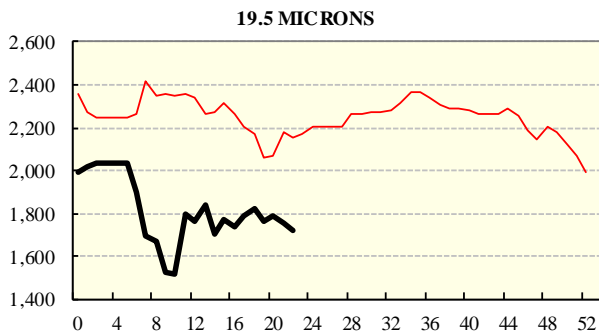
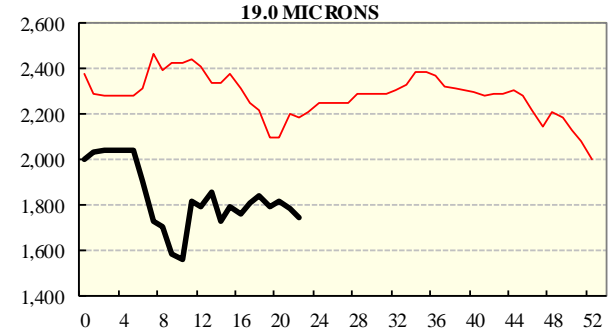
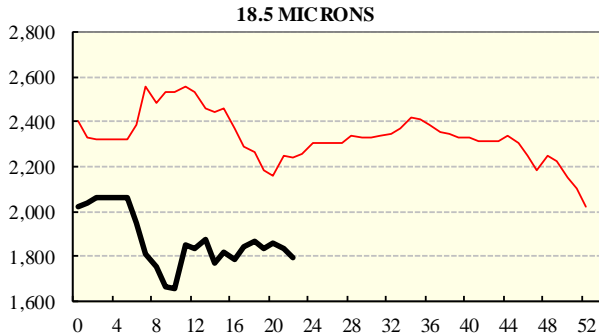
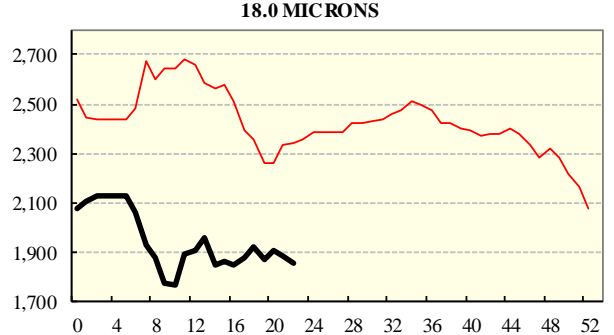
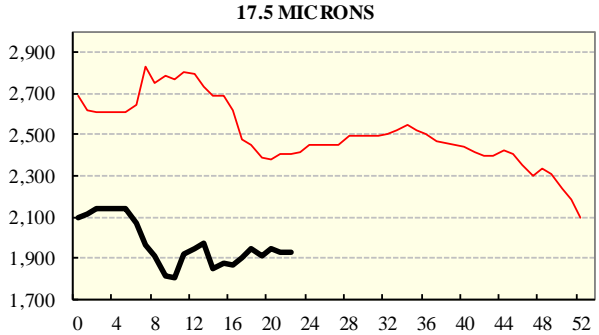
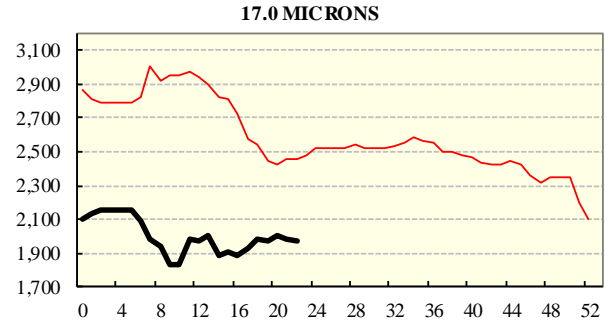
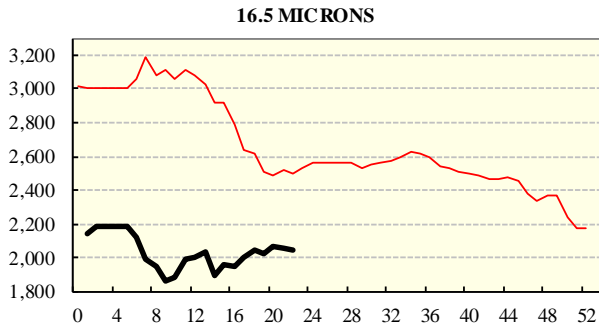
COMPARED WITH WKS 1/2		
Region	This Week	Diff
North	1561	-198
South	1511	-214
West	1640	-241

BALES OFFERED	
This Year	595,276
Last Year	683,894
Difference	-88,618
% Diff	-13.0%
FIRST OFFERED BALES	
Difference	-17.4%
% of Offering	89.8%

REGION BALES		
This Sale:		
North	10,237	
South	20,292	
West	7,275	
Progressive Totals:		
North	174,090	-13.3%
South	300,436	-16.0%
West	120,750	-3.7%

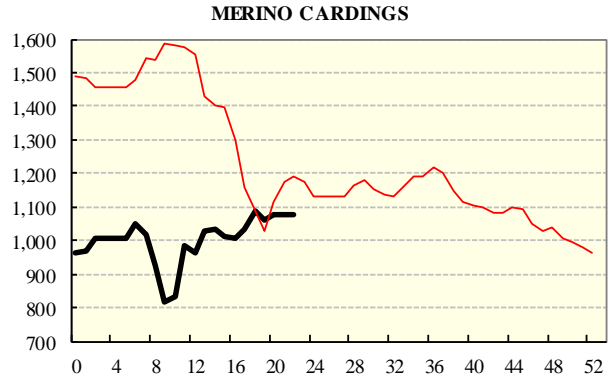
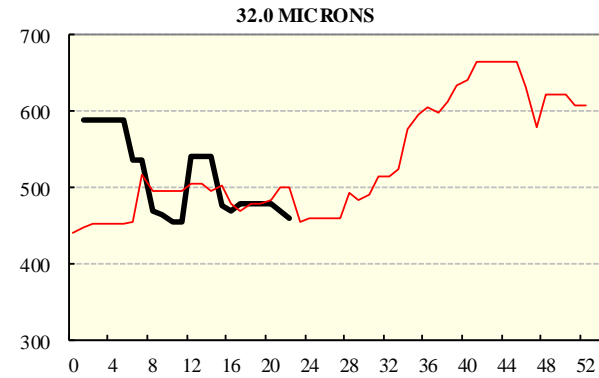
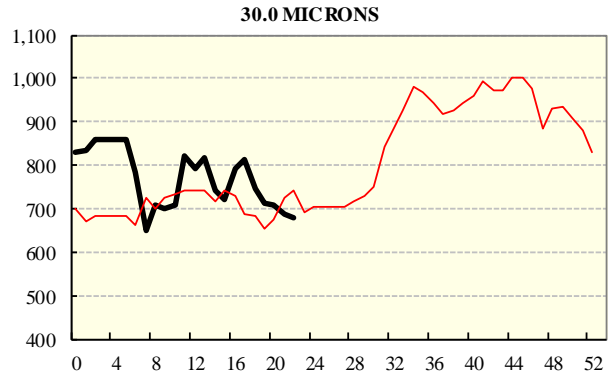
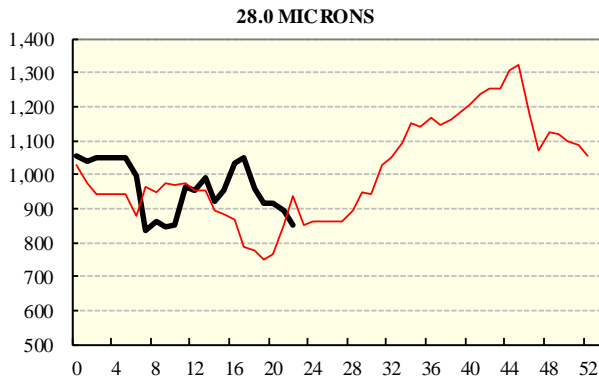
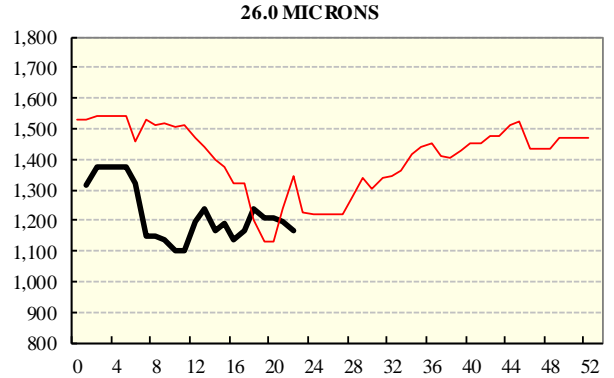
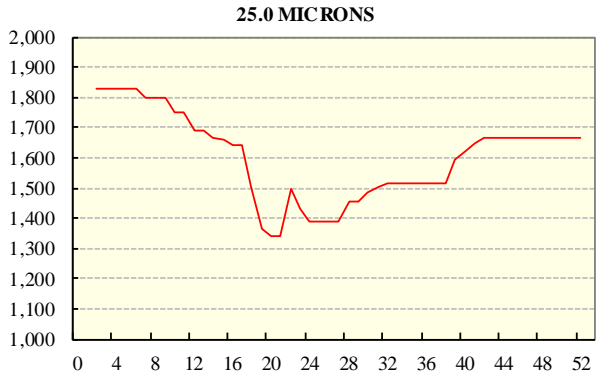
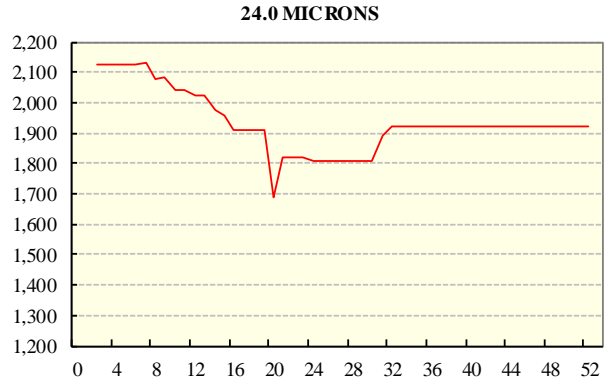
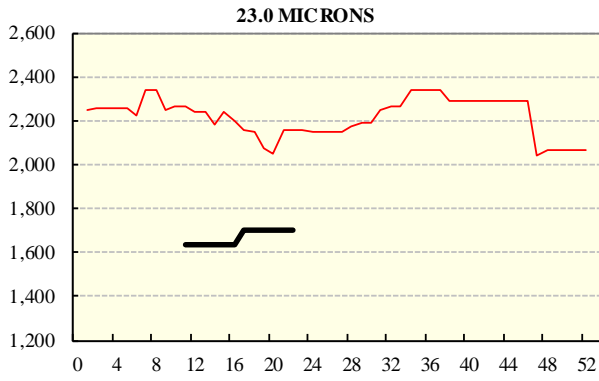
AVERAGE AWEX MICRON PRICE GUIDES

2019/20 (black graph line) and 2018/19 (red graph line)



AVERAGE AWEX MICRON PRICE GUIDES

2019/20 (black graph line) and 2018/19 (red graph line)



EASTERN MARKET INDICATOR (EMI) SINCE 1999/00 (¢/kg clean)

(In Australian, United States and European Currencies)

