

AUSTRALIAN WOOL INDUSTRIES SECRETARIAT INC

Unit 9, 42 - 46 Vella Drive
Sunshine West Vic 3020
Australia
Tel: 03 9311 0103
Fax: 03 9311 0138



Email: awis@woolindustries.org
Web: www.woolindustries.org
ABN: 30 454 304 967
Reg No: A0041776E

AWIS WOOL MARKET REVIEW Week Ending 13 July 2018 (Week 02)

The AWEX EMI finished at 1981¢, 13¢ lower (-0.7%) in Australian currency and 8¢ lower (-0.5%) in US currency in the last sale prior to the mid-year break at sales in Sydney, Melbourne and Fremantle.

40,544 bales were on offer nationally, compared with 43,880 bales last sale. 8.5% of the offering was passed in. This number is considered to be high, but is much lower than the value of 15.6% of last week when the EMI fell by 62¢, but was only just under 2000¢ at 1994¢.

AWEX reports that the value of the wool sold was \$77.5 million (\$2,089 per bale), taking the season total to \$159.3 million.

Day-to-Day and Sale-to-Sale Changes in AWEX Regional Indicators (Week 02)									
Centre	Last Sale		Day-to-Day Changes (Week 02)			Sale-to-Sale Change	Closing Indicator	Sale-to-Sale Changes	
	Week	Indicator	Tuesday	Wednesday	Thursday			US ¢	Euro ¢
Eastern	01	1994	No Sale	-12	-1	-13 (-0.7%)	1981	-8	-6
Northern	01	2026	No Sale	-16	+3	-13 (-0.6%)	2013	-9	-5
Southern	01	1975	No Sale	-11	-3	-14 (-0.7%)	1961	-9	-6
Western	01	2154	No Sale	-25	No Sale	-25 (-1.2%)	2129	-17	-13

The market was much more stable this week, particularly on Thursday when it eased by 1¢ in A\$ and by 5¢ in US\$.

Like last week, the general pattern among the Merino types were for the falls to be least among the finer wools. This accounted for the greater fall in the WMI (-25¢). There was no Micron Indicator data for the fine crossbreds. The coarse crossbred falls were of similar percentage values to the broader Merinos.

The US Exchange Rate finished 0.06¢ (0.1%) higher to close at 73.84¢ on Thursday.

Buyers for China were dominant, with support from buyers for India, Europe and Korea.

Looking ahead, the market has closed on a firm note; and at the very good level of 1981¢. All average AWEX Merino and crossbred Micron Price Guides are well up on Week 02 last year. It is a positive way to go into the three week break.

Differences in AWEX MPGs	18.5 and 22.0	18.0 and 22.0	17.5 and 22.0	17.0 and 22.0	16.5 and 22.0
North	123¢	236¢	413¢	594¢	804¢
South	105¢	207¢	367¢	544¢	772¢

Market Indicator	Changes From			
	Four Sales Ago Week 50	Start of the Season	Week 02 Last Year	Season Average to Week 02 Last Year
Eastern Market Indicator	-40 (-2.0%)	-13 (-0.7%)	+459 (+30.2%)	+465 (+30.5%)
Western Market Indicator	-59 (-2.7%)	-25 (-1.2%)	+559 (+35.6%)	+576 (+36.8%)

Sale-to-Sale Changes in Average AWEX Merino Micron Price Guides (MPGs)												
Micron	16.5	17.0	17.5	18.0	18.5	19.0	19.5	20.0	21.0	22.0	23.0	24.0
Since Last Sale												
Change ¢	-2	-22	-7	-3	-6	-12	-26	-23	-30	-42	+9	
Change %	-0.1%	-0.8%	-0.3%	-0.1%	-0.3%	-0.5%	-1.1%	-1.0%	-1.3%	-1.9%	+0.4%	
Since Start of the Season												
Change ¢	-1	-11	-4	-2	-3	-6	-13	-12	-15	-21	+4	0
Change %	0.0%	-0.4%	-0.2%	-0.1%	-0.1%	-0.3%	-0.6%	-0.5%	-0.7%	-0.9%	+0.2%	0.0%
Since Same Week Last Year												
Change ¢	+808	+593	+452	+349	+349	+454	+550	+635	+694	+734	+824	
Change %	+36.8%	+27.0%	+21.0%	+16.7%	+17.7%	+24.9%	+32.4%	+39.5%	+45.3%	+49.7%	+57.7%	

Sale-to-Sale Changes in Other Average AWEX Price Guides						
Micron	25.0	26.0	28.0	30.0	32.0	MC#
Since Last Sale						
Change ¢			-29	+14	+5	-23
Change %			-3.0%	+2.1%	+1.1%	-1.6%
Since the Start of the Season						
Change ¢	+481	+329	+230	+147	+56	+306
Change %	+40.5%	+29.7%	+30.0%	+26.3%	+14.6%	+26.3%
Since Same Week Last Year						
Change ¢	+528	+380	+245	+141		+275
Change %	+46.3%	+36.0%	+32.6%	+25.0%		+23.1%

Average Merino Cardings Price Guide

AUSTRALIAN WOOL INDUSTRIES SECRETARIAT INC

Unit 9, 42 - 46 Vella Drive
Sunshine West Vic 3020
Australia
Tel: 03 9311 0103
Fax: 03 9311 0138



Email: awis@woolindustries.org
Web: www.woolindustries.org
ABN: 30 454 304 967
Reg No: A0041776E

AWIS WOOL MARKET REVIEW Week Ending 13 July 2018 (Week 02)

The following tables show the details of this week's sale offering; the expected offerings over the next three sales; the changes in Exchange Rates since the previous sale; and highlights from the May ABS export data.

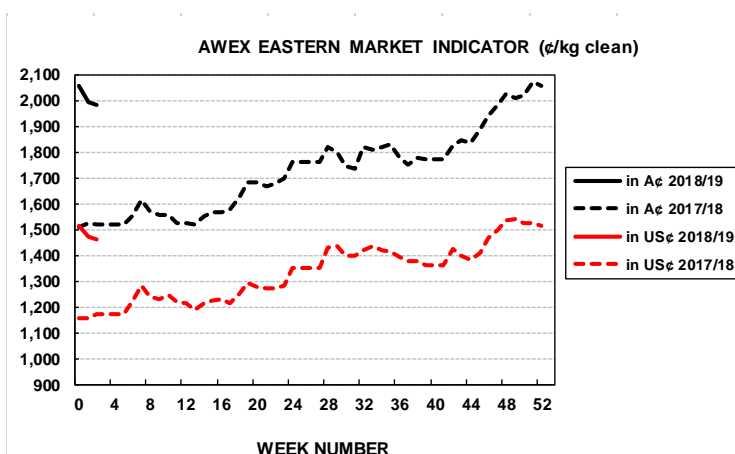
Details of this Week's Offering and the Comparison with the Previous Sale's Offering						
Centre	Last Sale	This Sale				
	Offering	Offering	Passed-In	Withdrawn Before Sale	Re- Offered	Bales Sold
North	15,730	14,477	6.1%	1.3%	5.0%	13,593
South	19,216	22,018	7.1%	1.3%	3.7%	20,457
West	8,934	4,049	24.8%	4.4%	21.4%	3,045
Australia	43,880	40,544	8.5%	1.6%	5.9%	37,095

Actual and % Changes in the Progressive Offerings from Last Year	
-3,915	-11.5%
-4,371	-9.6%
-4,894	-27.4%
-13,180	-13.5%

Next Sale Offerings and Year-on-Year Differences				
Centre	Week 03	Week 04	Week 05	Differences
North	No Sale	No Sale	No Sale	
South	No Sale	No Sale	No Sale	
West	No Sale	No Sale	No Sale	
New Zealand				
Australia				
Differences				

Exchange Rates (Reserve Bank)	Last Sale	Day-to-Day Changes					Sale-to-Sale Change	Closing Value	Season Min & Max	
		Fri	Mon	Tues	Wed	Thur			Min	Max
United States	73.78	+0.30	+0.59	-0.10	-0.49	-0.24	+0.06 (+0.1%)	73.84	73.78	73.84
Euro	63.09	+0.22	+0.13	+0.08	-0.37	+0.07	+0.13 (+0.2%)	63.22	63.09	63.22

Country	% Share of Australia's Wool Exports by Weight of Wool Shipped			Year-on-Year % Change July to May	
	May 2018	July to May 2017/18	July to May 2016/19	By Weight	By Value
China	78.0%	79.0%	79.3%	+3.5%	+19.6%
India	7.6%	5.6%	6.1%	-3.5%	+10.9%
Italy	2.6%	4.2%	4.0%	-0.3%	+28.7%
Czech Republic	5.2%	5.9%	5.0%	+19.9%	+20.2%
Malaysia	2.1%	1.6%	1.0%	+72.4%	+116.9%
Korea	1.3%	1.4%	1.7%	-4.9%	-8.0%
Taiwan	0.2%	0.6%	0.7%	-2.6%	-13.7%
Egypt	0.7%	1.0%	1.0%	+5.3%	+38.7%
Change all Countries				+10.6%	+20.9%



AVERAGE EMI	
This Year	1988
Last Year	1739
2016/17	1408
2015/16	1254
2014/15	1102

SEASON AVERAGES		
Region	This Year	Diff
North	2020	+208
South	1968	+275
West	2142	+334

THIS YEAR'S EMI	
This Week	1981
First Week	1994
Low (0/01)	1981
High (0/01)	1994

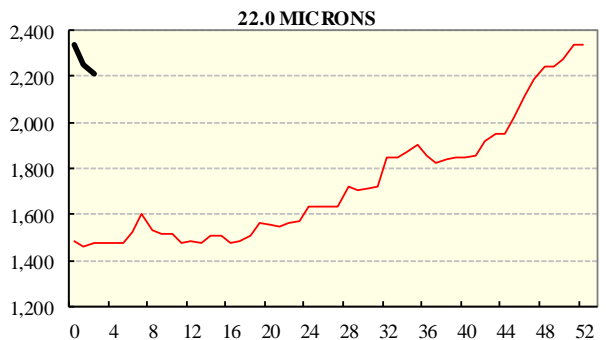
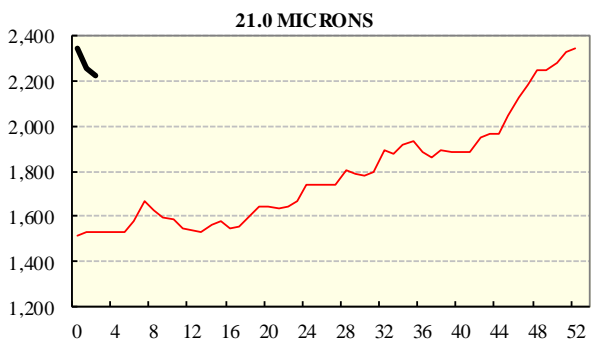
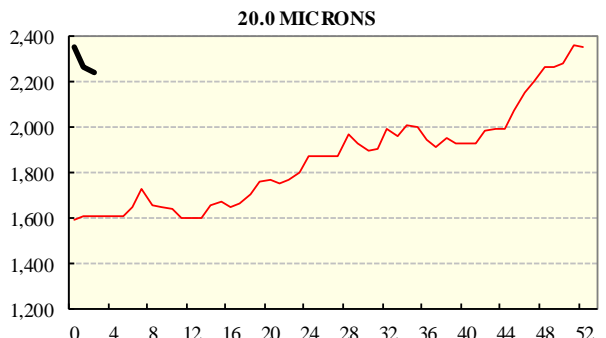
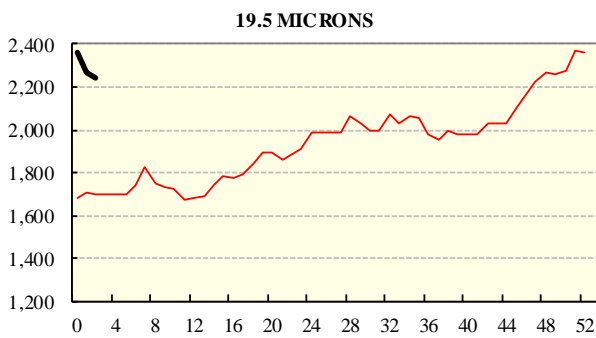
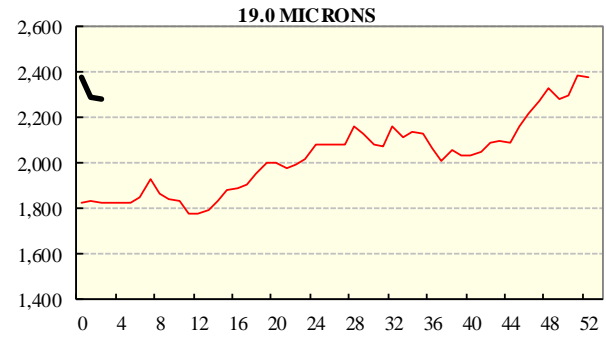
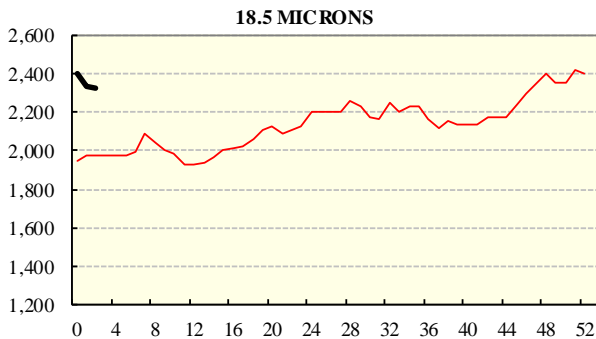
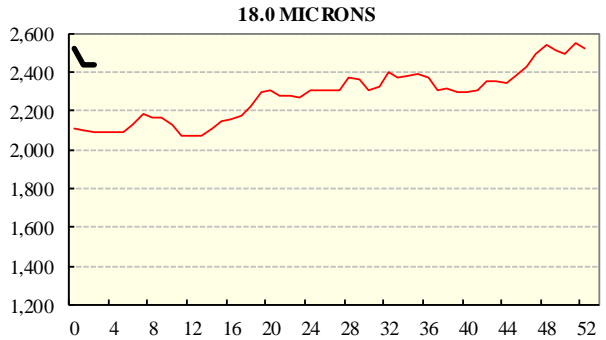
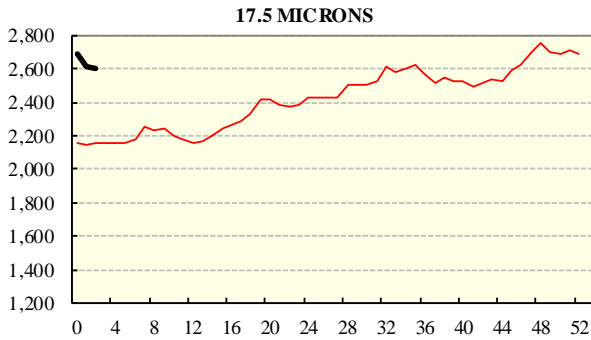
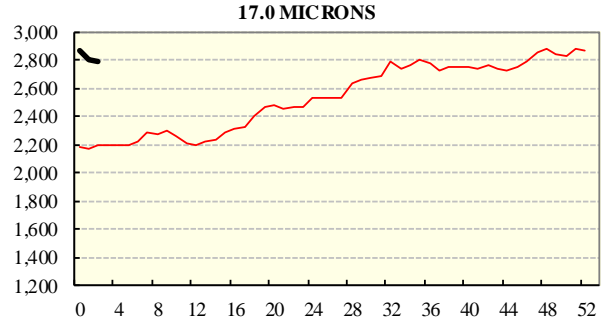
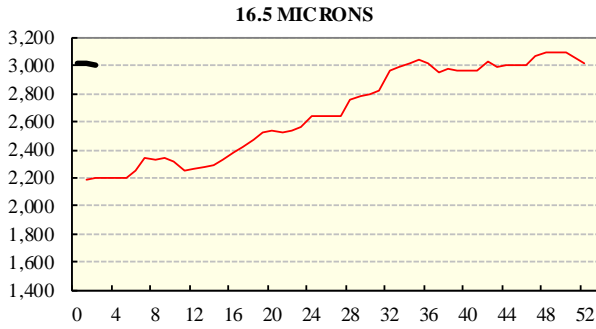
COMPARED WITH WKS 1/2		
Region	This Week	Diff
North	2013	-7
South	1961	-7
West	2129	-13

BALES OFFERED	
This Year	84,424
Last Year	97,604
Difference	-13,180
% Diff	-13.5%
FIRST OFFERED BALES	
Difference	-11.6%
% of Offering	96.2%

REGION BALES		
This Sale:		
North	14,477	
South	22,018	
West	4,049	
Progressive Totals:		
North	30,207	-11.5%
South	41,234	-9.6%
West	12,983	-27.4%

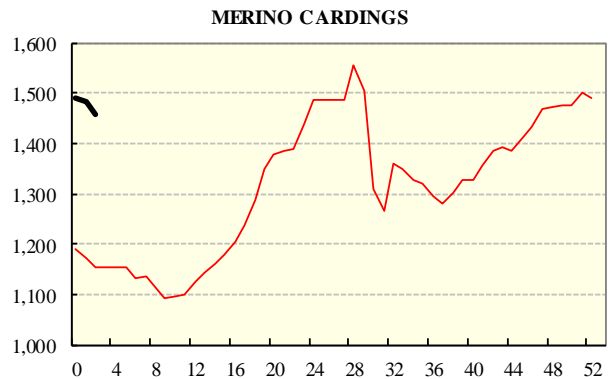
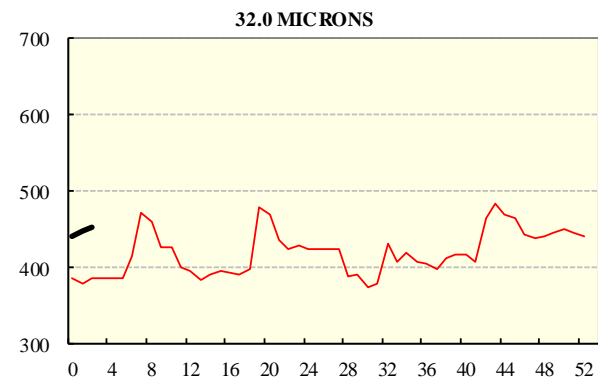
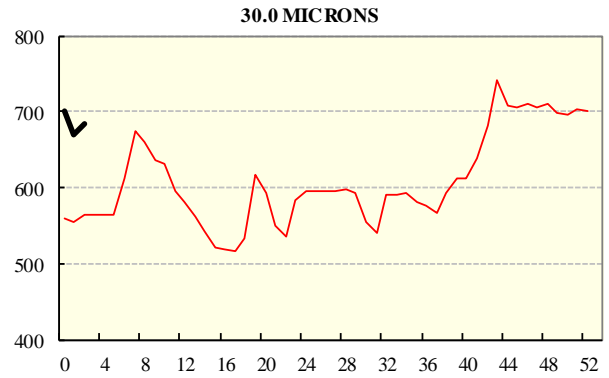
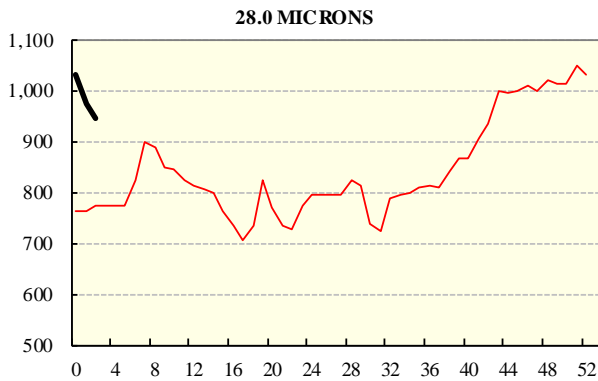
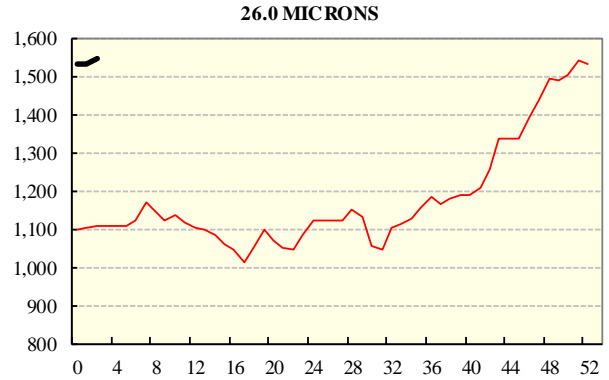
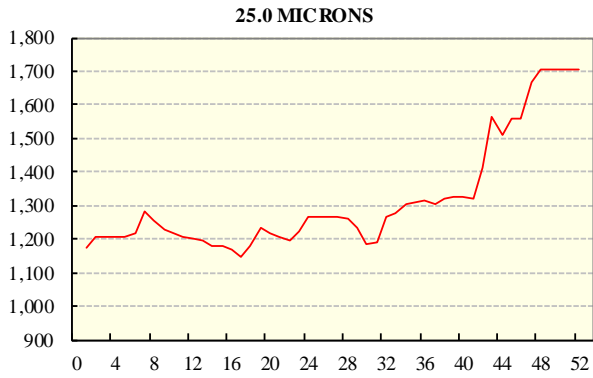
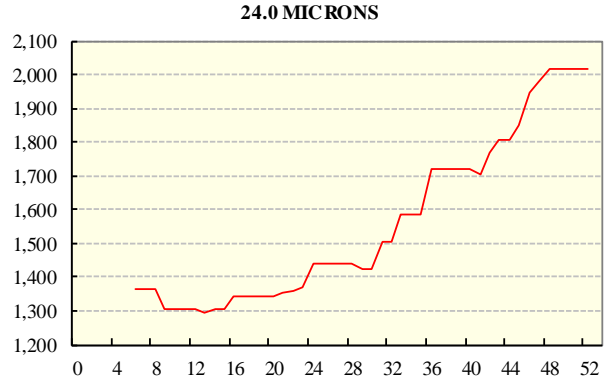
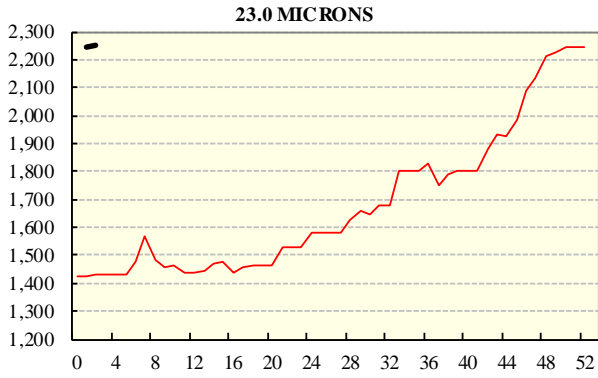
AVERAGE AWEX MICRON PRICE GUIDES

2018/19(black graph line) and 2017/18 (red graph line)



AVERAGE AWEX MICRON PRICE GUIDES

2018/19(black graph line) and 2017/18 (red graph line)



EASTERN MARKET INDICATOR (EMI) SINCE 1999/00 (¢/kg clean)

(In Australian, United States and European Currencies)

