

# AUSTRALIAN WOOL INDUSTRIES SECRETARIAT INC

Unit 9, 42 - 46 Vella Drive  
Sunshine West Vic 3020  
Australia  
Tel: 03 9311 0103  
Fax: 03 9311 0138



Email: awis@woolindustries.org  
Web: www.woolindustries.org  
ABN: 30 454 304 967  
Reg No: A0041776E

## AWIS WOOL MARKET REVIEW

Week Ending 28 October 2016 (Week 17)

The AWEX EMI was unchanged, in Australian currency and 5¢ lower (-0.5%) in US currency at sales in Sydney, Melbourne and Fremantle this week.

42,190 bales were on offer nationally, compared with 34,556 bales last sale. 4.8% of the offering was passed in.

AWEX reports that the value of the wool sold was \$64.1 million (\$1,597 per bale).

The New Zealand Merino Company offered 2,701 bales in Melbourne on Tuesday, of which 7.7% were passed in.

Day-to-Day and Sale-to-Sale Changes in AWEX Regional Indicators (Week 17)									
Centre	Last Sale		Day-to-Day Changes (Week 17)			Sale-to-Sale Change	Closing Indicator	Sale-to-Sale Changes	
	Week	Indicator	Tuesday	Wednesday	Thursday			US ¢	Euro ¢
Eastern	16	1331	No Sale	0	0	0 (0.0%)	1331	-5	+1
Northern	16	1372	No Sale	+2	+1	+3 (+0.2%)	1375	-3	+3
Southern	16	1305	No Sale	-2	0	-2 (-0.2%)	1303	-7	-1
Western	16	1391	No Sale	+5	-3	+2 (+0.1%)	1393	-4	+2

The market withstood the increase in the size of the offering from the last two sales and the news of a likely 49,000 bale offering in the coming week.

Small gains occurred across nearly all average AWEX Merino MPGs, with the premiums for fine Merino wool being maintained at their levels of recent weeks. Merino skirtings and oddments were in keen demand, with the average AWEX Merino Cardings Price Guide up by 71¢ over the last five weeks to close at 1116¢. This was, the first time it has exceeded 1100¢ this season.

Crossbreds eased again, with falls in all their MPGs over both days. The average MPGs for 28, 30 and 32 micron wools are the only ones to be below their values of the previous season.

The US Exchange Rate moved up and down through ranges of up to ±0.5¢ before finishing 0.39¢ (-0.5%) lower to close at 76.31¢ on Thursday.

Buyers for China were dominant, with support from buyers for India, Europe and Korea.

Differences in AWEX MPGs	18.5 and 22.0	18.0 and 22.0	17.5 and 22.0	17.0 and 22.0	16.5 and 22.0
North	231¢	253¢	272¢	281¢	289¢
South	211¢	250¢	258¢	265¢	261¢

Market Indicator	Changes From			
	Four Sales Ago Week 13	Start of the Season	Week 17 Last Year	Season Average to Week 17 Last Year
Eastern Market Indicator	+41 (+3.2%)	+15 (+1.1%)	+126 (+10.5%)	+76 (+6.2%)
Western Market Indicator	+30 (+2.2%)	-26 (-1.8%)	+146 (+11.7%)	+121 (+9.6%)

Sale-to-Sale Changes in Average AWEX Merino Micron Price Guides (MPGs)												
Micron	16.5	17.0	17.5	18.0	18.5	19.0	19.5	20.0	21.0	22.0	23.0	24.0
<b>Since Last Sale</b>												
Change ¢	+2	+9	-1	+3	-5	-1	-3	+1	-5	-1		
Change %	+0.1%	+0.5%	-0.1%	+0.2%	-0.3%	-0.1%	-0.2%	+0.1%	-0.4%	-0.1%		
<b>Since Start of the Season</b>												
Change ¢	+82	+91	+90	+92	+85	+53	+19	-35	-78	-77	-79	
Change %	+5.2%	+5.8%	+5.8%	+5.9%	+5.6%	+3.5%	+1.3%	-2.3%	-5.3%	-5.3%	-5.4%	
<b>Since Same Week Last Year</b>												
Change ¢	+201	+213	+213	+210	+217	+227	+219	+176	+138	+137	+138	
Change %	+13.7%	+14.7%	+14.8%	+14.7%	+15.6%	+17.0%	+16.8%	+13.8%	+10.9%	+11.0%	+11.2%	

Sale-to-Sale Changes in Other Average AWEX Price Guides						
Micron	25.0	26.0	28.0	30.0	32.0	MC <sup>#</sup>
<b>Since Last Sale</b>						
Change ¢	-17	-19	-13	-16	-20	+22
Change %	-1.4%	-1.8%	-1.7%	-2.6%	-4.0%	+2.0%
<b>Since Start of the Season</b>						
Change ¢	-39	-35	-18	-47	-40	+30
Change %	-3.3%	-3.2%	-2.4%	-7.3%	-7.6%	+2.8%
<b>Since Same Week Last Year</b>						
Change ¢	+69	+56	-111	-208	-210	+53
Change %	+6.3%	+5.6%	-13.1%	-25.9%	-30.3%	+5.0%

# Average Merino Cardings Price Guide

# AUSTRALIAN WOOL INDUSTRIES SECRETARIAT INC

Unit 9, 42 - 46 Vella Drive  
Sunshine West Vic 3020  
Australia  
Tel: 03 9311 0103  
Fax: 03 9311 0138



Email: awis@woolindustries.org  
Web: www.woolindustries.org  
ABN: 30 454 304 967  
Reg No: A0041776E

## AWIS WOOL MARKET REVIEW Week Ending 28 October 2016 (Week 17)

The following tables show the details of this week's sale offering; the expected offerings over the next three sales; the changes in Exchange Rates since the previous sale; and highlights from the August ABS export data.

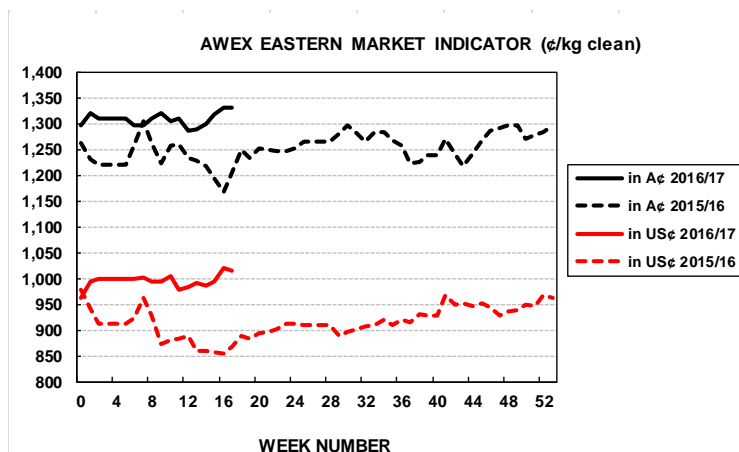
Details of this Week's Offering and the Comparison with the Previous Sale's Offering						
Centre	Last Sale	This Sale				
	Offering	Offering	Passed-In	Withdrawn Before Sale	Re- Offered	Bales Sold
North	9,184	12,375	5.0%	1.6%	1.8%	11,758
South	16,671	20,035	3.9%	1.7%	3.3%	19,251
West	8,701	9,780	6.6%	1.6%	4.0%	9,137
<b>Australia</b>	<b>34,556</b>	<b>42,190</b>	<b>4.8%</b>	<b>1.6%</b>	<b>3.0%</b>	<b>40,146</b>

Actual and % Changes in the Progressive Offerings from Last Year	
+1,598	+1.0%
-4,390	-1.7%
+12,206	+12.2%
<b>+9,414</b>	<b>+1.8%</b>

Next Sale Offerings and Year-on-Year Differences				
Centre	Week 18	Week 19	Week 20	Differences
North	14,268	11,860	11,440	+8.1%
South	25,588	20,645	24,380	+5.2%
West	9,503	8,120	8,120	-1.7%
<b>New Zealand</b>	<b>1,550</b>			
<b>Australia</b>	<b>49,359</b>	<b>40,625</b>	<b>43,940</b>	<b>+4.6%</b>
<b>Differences</b>	<b>+23.8%</b>	<b>-1.6%</b>	<b>-6.3%</b>	

Exchange Rates (Reserve Bank)	Last Sale	Day-to-Day Changes					Sale-to-Sale Change	Closing Value	Season Min & Max	
		Fri	Mon	Tues	Wed	Thur			Min	Max
United States	76.70	-0.40	-0.15	+0.14	+0.54	-0.52	-0.39 (-0.5%)	76.31	74.69	77.11
Euro	69.96	+0.02	+0.08	+0.05	+0.46	-0.57	+0.04 (+0.1%)	70.00	66.40	70.00

Country	% Share of Australia's Wool Exports by Weight of Wool Shipped			Year-on-Year % Change July to August	
	August 2016	July to August This Season	July to August Last Season	By Weight	By Value
China	76.9%	75.2%	74.5%	-2.0%	-3.6%
India	6.0%	7.5%	9.5%	-23.3%	-19.6%
Italy	6.3%	5.7%	5.0%	+5.9%	+19.8%
Czech Republic	5.3%	5.4%	3.4%	+54.3%	+61.7%
Malaysia	1.0%	1.0%	1.3%	-22.9%	-36.7%
Korea	1.7%	1.7%	1.5%	+5.7%	+2.9%
Taiwan	0.1%	0.7%	0.9%	-19.5%	-14.6%
Egypt	0.8%	1.0%	1.5%	-34.5%	-36.1%
<b>Change all Countries</b>				<b>-2.9%</b>	<b>-3.7%</b>



AVERAGE EMI	
This Year	1309
Last Year	1254
2014/15	1102
2013/14	1070
2012/13	1035

SEASON AVERAGES		
Region	This Year	Diff
North	1340	+61
South	1289	+51
West	1387	+79

THIS YEAR'S EMI	
This Week	1331
First Week	1320
Low (26/10)	1287
High (17/10)	1331

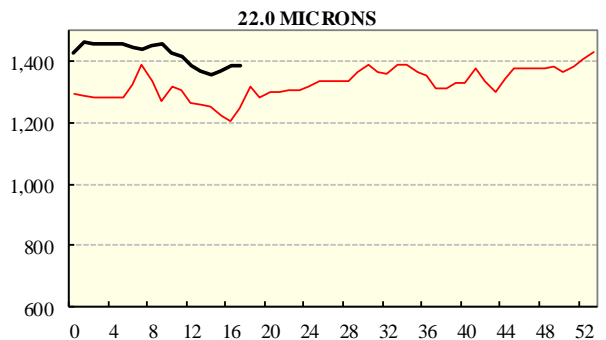
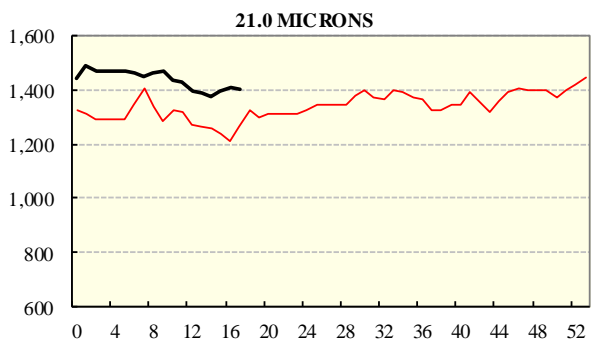
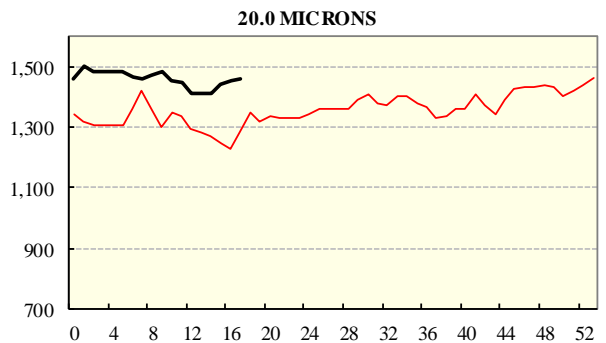
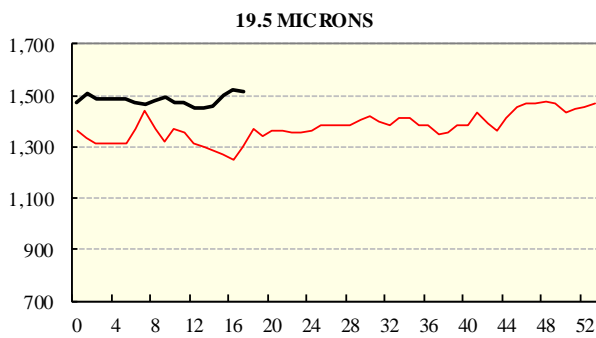
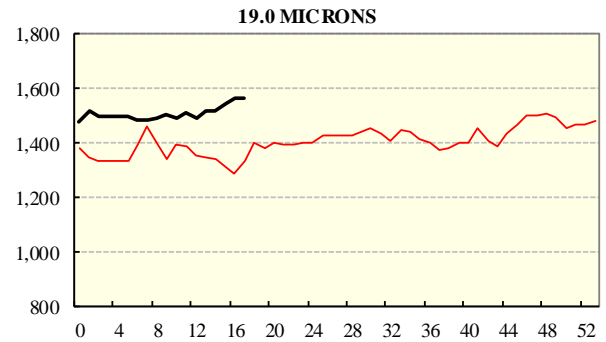
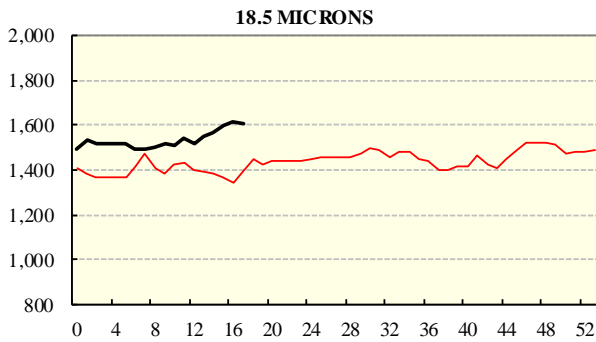
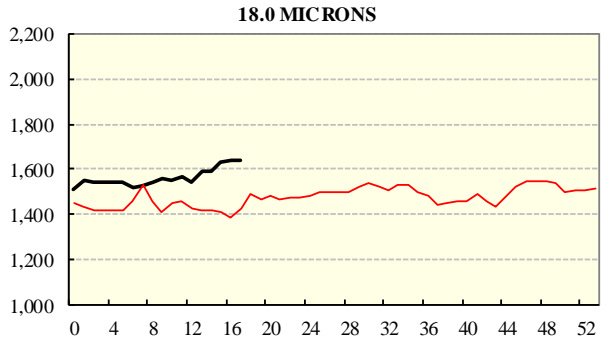
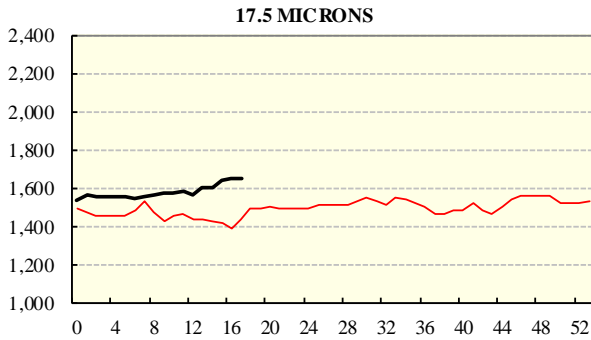
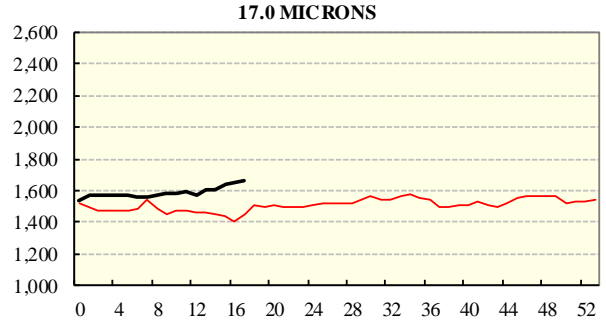
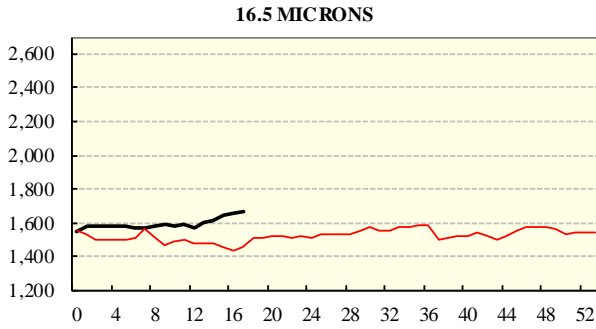
COMPARED WITH WKS 1/2		
Region	This Week	Diff
North	1375	+38
South	1303	+2
West	1393	-26

BALES OFFERED	
This Year	531,826
Last Year	522,412
Difference	+9,414
% Diff	+1.8%
FIRST OFFERED BALES	
Difference	+2.4%
% of Offering	95.8%

REGION BALES		
This Sale:		
North	12,375	
South	20,035	
West	9,780	
Progressive Totals:		
North	163,586	+1.0%
South	255,974	-1.7%
West	112,266	+12.2%

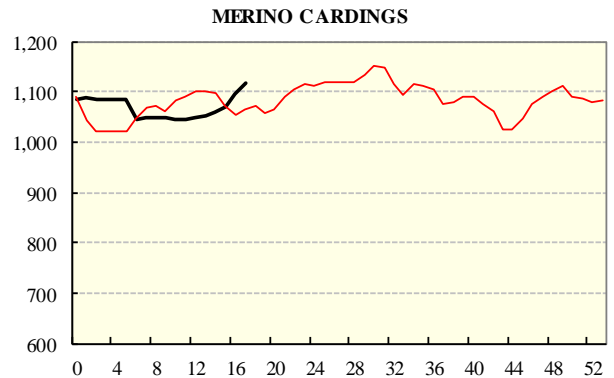
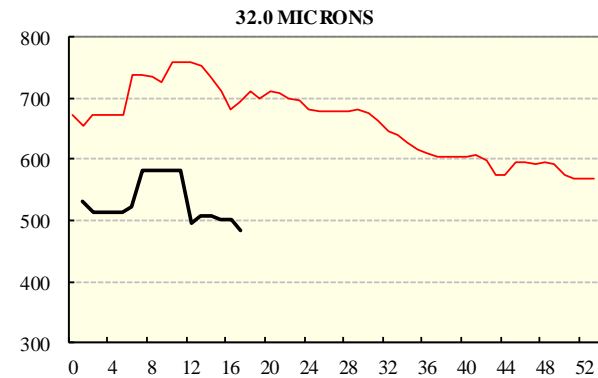
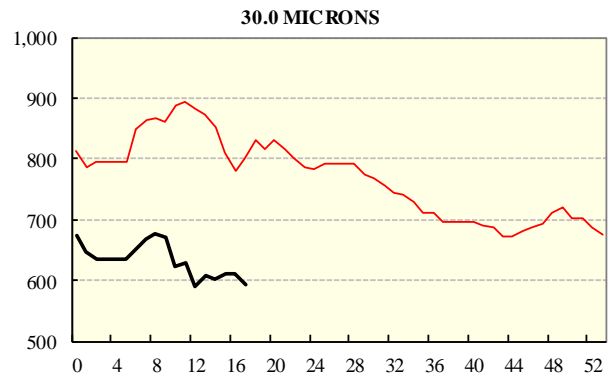
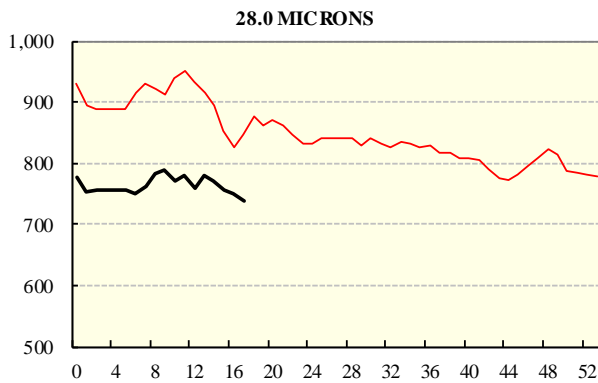
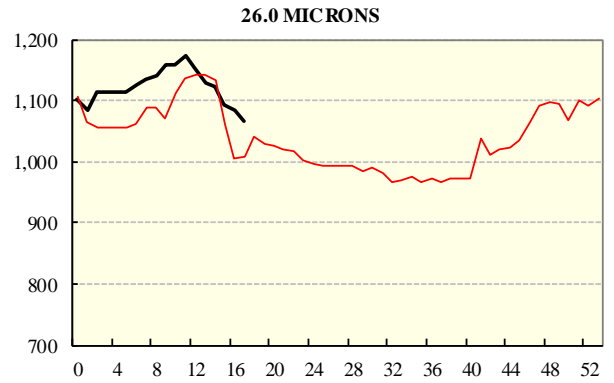
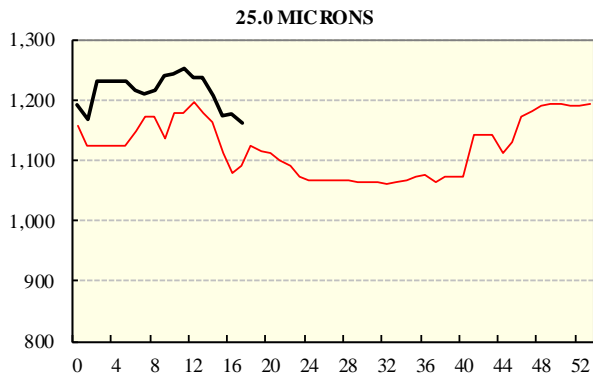
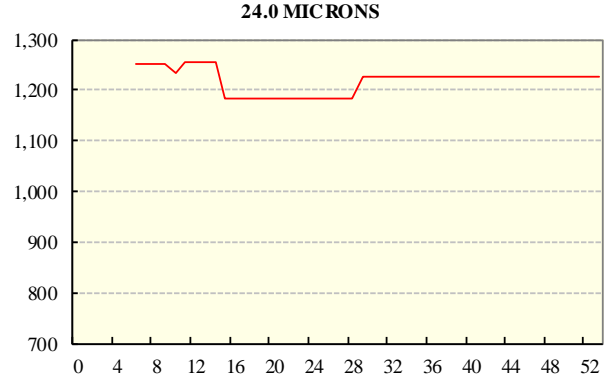
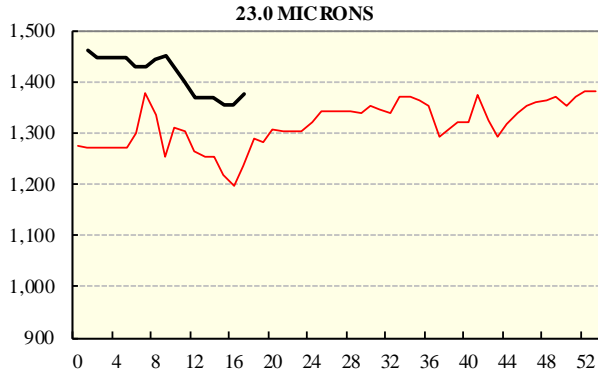
# AVERAGE AWEX MICRON PRICE GUIDES

2016/17( black graph line) and 2015/16 (red graph line)

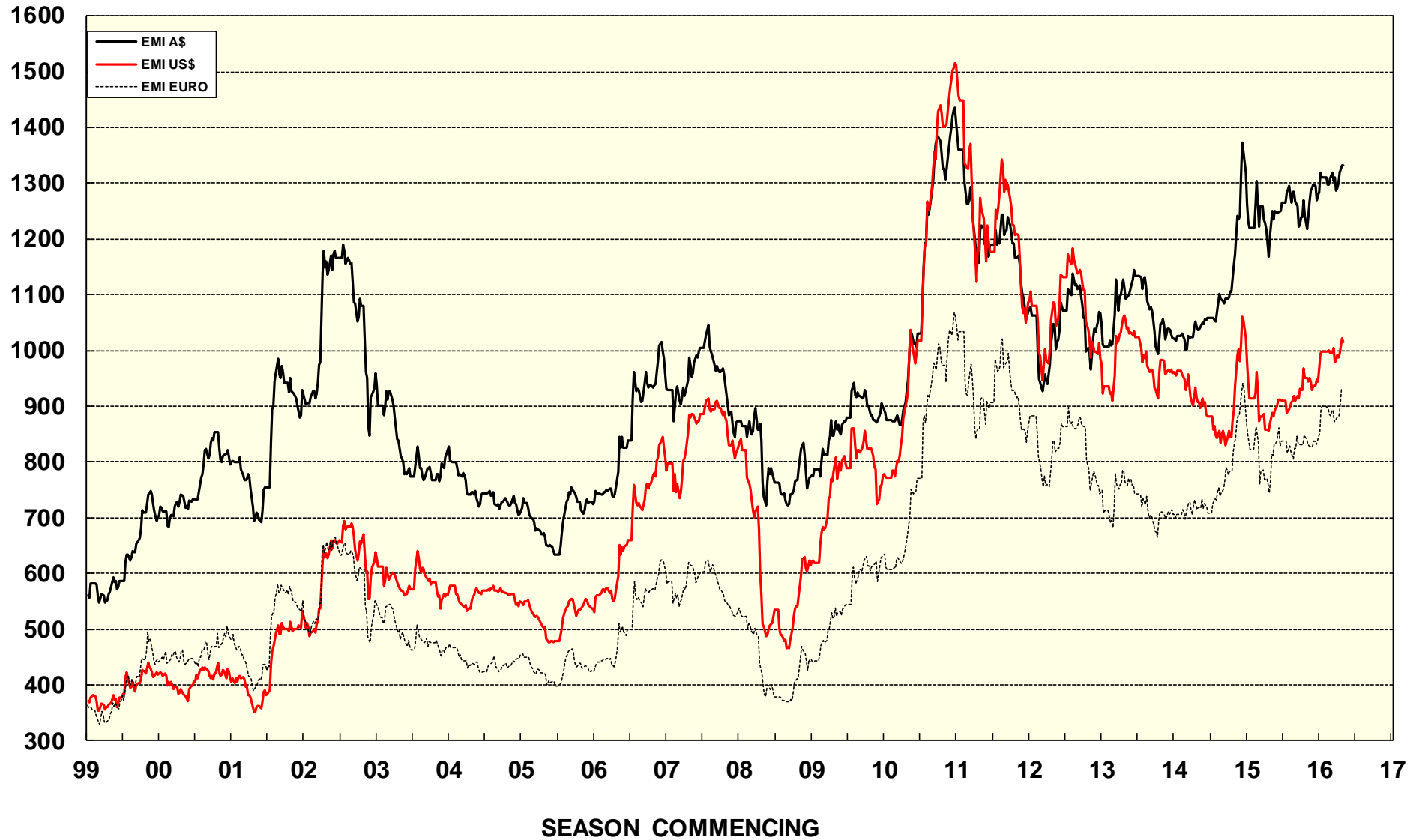


# AVERAGE AWEX MICRON PRICE GUIDES

2016/17 (black graph line) and 2015/16 (red graph line)



### EASTERN MARKET INDICATOR (EMI) SINCE 1999/00 (¢/kg clean) (In Australian, United States and European Currencies)



© AWIS 2016 (for permission to reprint, in part or whole, please contact this office)

For further information

Peter Morgan

03 9311 0103